

PRYSMIAN CABLES & SYSTEMS LIMITED

(The new name for Pirelli Cables)

SHORTFORM CATALOGUE

Version 02.06

Shortform Catalogue
Version 02.06

"Same Knowledge, Different Name"

Welcome to the new edition of the Prysmian Components' Shortform Catalogue, containing our extensive range of power cable accessories. As you may be aware Prysmian is the new name for the Pirelli Cables Businesses worldwide. This is the first Shortform catalogue produced with the new brand identity, and contains all our latest product ranges in one handy, easy to read, document.

Trade price lists to accompany this product catalogue are available from our sales office on request - or for download via our website: www.prysmian.co.uk (please select 'E-catalogues' from the left hand menu – then 'Components Trade Price List' from the right hand menu).

Prysmian Components continues to offer many additional services including full technical support and a design service for complete cable systems. As part of Prysmian Cables & Systems, we are in the unique position of being able to offer cables and accessories for Industrial, LV and MV Applications (including on and offshore Oil, Gas and Petrochemical applications).

This removes the risk of independently purchasing cables and accessories from different manufacturers and the associated problems of non-compatibility with size and design. Unlike our competitors we are able to provide our customers with a complete system solution of integrated cables and accessories.

The products in this catalogue are CE marked or appropriately certified for the territory or market for which they are intended. In order to comply with these stringent requirements we hold and maintain technical files for all product ranges – and are willing to supply test reports, MSD sheets and technical datasheets as requested.

Terms and Conditions

Prysmian Components' products are sold subject to our Standard Conditions of Sale, copies of which are available upon request, and on our website: www.prysmian.co.uk

Prysmian shall have the right at any time prior to delivery or collection of the products to change their specification in accordance with clause 3.2 of our Standard Conditions of Sale

Please contact the Sales Office for lead times and details of minimum order quantities. Special delivery requirements for example a.m. next day deliveries, will be charged at cost. This cost will be confirmed at time of order.

For further information please contact our sales office: Prysmian Cables & Systems Limited, Components Unit, P.O Box 4, Hall Lane, Prescott, Merseyside, L34 5UR.

Components Sales Department

Tel: +44 (0) 151 430 3655
Fax: +44 (0) 151 430 3636
E-mail: components.sales@prysmian.com

Opening Hours

08.00 - 17.00 Monday - Friday

Index

Selector Chart

Section 1	Cable Glands
Section 2	Cleats & Cable Fixings
Section 3	Cable Connectors & Tooling
Section 4	Cable Joints & Terminations
Section 5	Separable Connectors
Section 6	Pressline Emergency Stop System

Cable Glands

Section

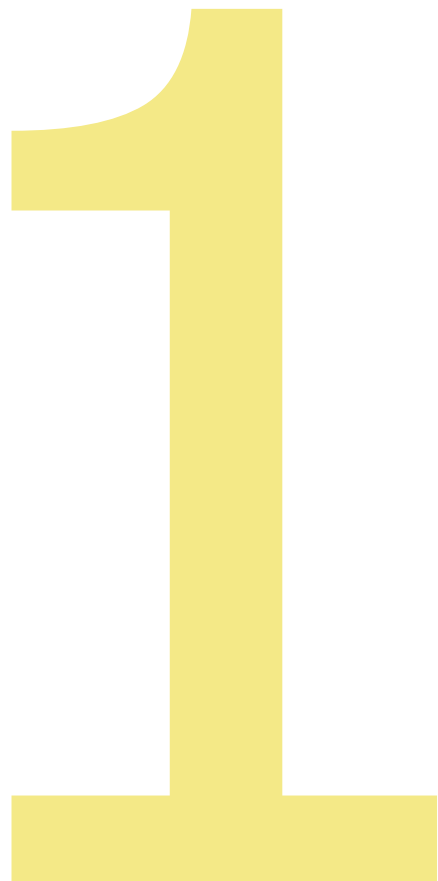
Prysmian Components offer cable glands for a wide range of requirements from simple industrial applications to hazardous areas, on and offshore.

All Industrial Cable glands are designed and manufactured in accordance with either BS6121 or EN50262, which are the prevailing UK and European design and performance standards applicable.

All Hazardous Area Glands are designed and manufactured in accordance with the requirements of the ATEX Directive - 94/9/EC.

Accreditations have been obtained from SIRA, UL and CSA. They are also recognized by DEMKO, NEMKO, Lloyds Register of Shipping, Shell etc.

Prysmian Cable Glands are manufactured under a BS EN ISO 9001 quality system and designed to meet stringent national and international standards.



BICON GLAND KITS

BW GLAND KIT (INDOOR TYPE) FOR STEEL WIRE ARMoured CABLE

Includes Gland, Steel Backnut, PVC Shroud and Brass Earth Tag.

Size	Ref. No.
20S	BW20SK
20	BW20K
25	BW25K
32	BW32K
40	BW40K
50	BW50K
63	BW63K
75S	BW75SK
75	BW75K



CW GLAND KIT (INDOOR/OUTDOOR TYPE) FOR STEEL WIRE ARMoured CABLE

Includes Gland, Steel Backnut, PVC Shroud and Brass Earth Tag.

Size	Ref. No.
20SS	CW20SSK
20S	CW20SK
20	CW20K
25	CW25K
32	CW32K
40	CW40K
50S	CW50SK
50	CW50K
63	CW63K
75	CW75K
85	CW85K



A1/A2 GLAND KIT (INDOOR/OUTDOOR TYPE) FOR UNARMoured CABLE

Includes Gland, PVC Shroud and Brass Backnut.

Size	Ref. No.
20SS	KM40971
20S	KM40952
20	KM40953
25	KM40955
32	KM40956
40	KM40957
50S	KM40958
50	KM40959
63S	KM40960
63	KM40961
75S	KM40962
75	KM40963



BICON LSOH GLAND KITS

LSOH cable gland kits designed for use with FP, Afumex®, LSOH and LSF cables.

BW LSOH GLAND KIT (INDOOR TYPE) FOR STEEL WIRE ARMoured CABLE

Includes Gland, Brass Backnut, Afumex Shroud and Brass Earth Tag. LUL approved.

Size	Ref. No.
20S	LSF20SBW
20	LSF20BW
25	LSF25BW
32	LSF32BW
40	LSF40BW
50	LSF50BW
63	LSF63BW
75S	LSF75SBW
75	LSF75BW



CW LSOH GLAND KIT (INDOOR/OUTDOOR TYPE) FOR STEEL WIRE ARMoured CABLE

Includes Gland, Brass Backnut, Afumex Shroud and Brass Earth Tag. LUL approved.

Size	Ref. No.
20SS	LSF20SSCW
20S	LSF20SCW
20	LSF20CW
25	LSF25CW
32	LSF32CW
40	LSF40CW
50S	LSF50SCW
50	LSF50CW
63	LSF63CW
75	LSF75CW



A1/A2 LSOH GLAND KIT (INDOOR/OUTDOOR TYPE) FOR UNARMoured CABLE

Includes Gland, Brass Backnut and Afumex Shroud. LUL approved.

Size	Ref. No.
20SS	423LSF71
20S	423LSF52
20	423LSF53
25	423LSF55
32	423LSF56
40	423LSF57
50S	423LSF58
50	423LSF59
63S	423LSF60
63	423LSF61
75S	423LSF62
75	423LSF63



Gland kits up to size 25 contain 2 sets of glands and accessories, larger kits contain 1 set.

BICON GLAND KITS

CW GLAND KIT (INDOOR/OUTDOOR TYPE) FOR ALUMINIUM WIRE ARMoured CABLE

Includes Gland, Aluminium Backnut, PCP or PVC Shroud and Aluminium Earth Tag.

Size	Ref. No. (PCP)	Ref. No. (PVC)
20	422AL53	-
25	422AL55	-
32	422AL56	422AL56P
40	422AL57	422AL57P
50S	422AL58	422AL58P
50	422AL59	422AL59P
63	422AL61	422AL61P
75	422AL63	-



E1W GLAND KIT (INDOOR/OUTDOOR TYPE) FOR STEEL WIRE ARMoured CABLE

Includes Gland, Steel Backnut, PVC Shroud and Brass Earth Tag.

Size	Ref. No.
20SS	E1W20SSK
20S	E1W20SK
20	E1W20K
25	E1W25K
32	E1W32K
40	E1W40K
50S	E1W50SK
50	E1W50K
63S	E1W63SK
63	E1W63K
75S	E1W75SK
75	E1W75K



E1W GLAND KIT (INDOOR/OUTDOOR TYPE) FOR STEEL WIRE ARMoured CABLE

Includes Gland, Brass Backnut, PCP Shroud and Brass Earth Tag.

Size	Ref. No.
20SS	KA41371
20S	KA41352
20	KA41353
25	KA41355
32	KA41356
40	KA41357
50S	KA41358
50	KA41359
63S	KA41360
63	KA41361
75S	KA41362
75	KA41363



BICON LSOH GLAND KITS

LSOH cable gland kits designed for use with FP, Afumex[®], LSOH and LSF cables.

CW LSOH GLAND KIT (INDOOR/OUTDOOR TYPE) FOR ALUMINIUM WIRE ARMoured CABLE

Includes Gland, Aluminium Backnut, Afumex Shroud and Aluminium Earth Tag. LUL approved.

Size	Ref. No.
20	432LSF53
25	432LSF55
32	432LSF56
40	432LSF57
50	432LSF59
63	432LSF61



E1W LSOH GLAND KIT (INDOOR/OUTDOOR TYPE) FOR STEEL WIRE ARMoured CABLE

Includes Gland, Brass Backnut, Afumex Shroud and Brass Earth Tag. LUL approved.

Size	Ref. No.
20SS	LSF20SSE1W
20S	LSF20SE1W
20	LSF20E1W
25	LSF25E1W
32	LSF32E1W
40	LSF40E1W
50S	LSF50SE1W
50	LSF50E1W
63S	LSF63SE1W
63	LSF63E1W
75S	LSF75SE1W
75	LSF75E1W



Recommended for Prysmian's FP400 cables.

BICON GLAND KITS

CX GLAND KIT (INDOOR/OUTDOOR TYPE) FOR WIRE BRAIDED CABLE

Includes Gland, Brass Backnut, PCP Shroud and Brass Earth Tag.

Size	Ref. No.
MINI	KA41491*
20SS	KA41471
20S	KA41452
20	KA41453
25	KA41455
32	KA41456
40	KA41457
50	KA41459
63	KA41461
75	KA41463



* This kit does not contain a shroud.

Gland kits up to size 25 contain 2 sets of glands and accessories, larger kits contain 1 set.

CON GLAND KITS

AXT GLAND KIT (INDOOR/OUTDOOR TYPE) FOR WIRE BRAIDED CABLE

Includes Gland, PVC Shroud, Steel Backnut, Brass Washers and Earth Tag

Size	Ref. No.
M20S	AXT20SK
M20	AXT20K
M25	AXT25K



Gland kits up to size 25 contain 2 sets of glands and accessories.

CON INTEGRAL EARTH GLANDS

CW GLAND (INDOOR/OUTDOOR) INTEGRAL EARTH TYPE FOR SWA CABLES

Size	Ref. No.
20S	419CE52
20	419CE53
25	419CE55
32	419CE56
40	419CE57
50	419CE59
63	419CE61
75	419CE63
85	419CE64



Note: Other sizes are available upon request.

CW GLAND (INDOOR/OUTDOOR) INTEGRAL EARTH TYPE FOR AWA CABLES

Size	Ref. No.
25	454CE55
32	454CE56
40	454CE57
50	454CE59
63	454CE61
75	454CE63



CON NYLON GLANDS

NYLON GLAND (INDOOR/OUTDOOR TYPE) FOR UNARMoured CABLES

IP68 rated.

Size	Ref. No.
M16	403K*51
M20	403K*53
M25	403K*55
M32	403K*56



Note: for black insert 'B' e.g. 403KB51
for white insert 'W'
for red insert 'R'
for grey insert 'G'

NYLON EExe II GLAND (INDOOR/OUTDOOR) FOR UNARMoured CABLE

With backnut.

Size	Ref. No.
16	403AT51
20S	403AT52
20	403AT53
25	403AT55
32	403AT56
40	403AT57
50	403AT59
63	403AT61



CON FIRE PERFORMANCE (FP) GLANDS

FP GLAND FOR FIRE PERFORMANCE CABLE

FP200 easyfit cable gland
GL FP2520 - Red and White

Size	Ref. No.
2 x 1.0	FP2520*
2 x 1.5	FP2520*
2 x 2.5	FP2520*
2 x 4.0	FP2520*
3 x 1.0	FP2520*
3 x 1.5	FP2520*
3 x 2.5	FP2520*
3 x 4.0	FP2520*
4 x 1.0	FP2520*
4 x 1.5	FP2520*
4 x 2.5	FP2520*



*Note: Add suffix 'R' for red or 'W' for white e.g. FP2520R

Fixings for FP Cables can be found on page 19.

FP600 (INDOOR/OUTDOOR) TYPE FOR FP600 ENHANCED FIRE RESISTANT CABLES

And other interlocking steel tape armoured cables.

Size	Ref. No.
25	416FP55
32	416FP56
40	416FP57
50	416FP59



BRASS BACKNUT

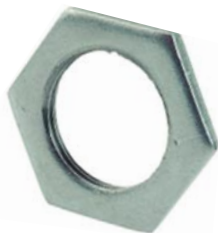
Size	Ref. No.
16	429AA51
20	429AA53
25	429AA55
32	429AA56
40	429AA57
50	429AA59
63	429AA61
75	429AA63
85	429AA64
90	429AA65
100	429AA66
110	429AA67



Note: for sale in multiples of 10.

ALUMINIUM BACKNUT

Size	Ref. No.
25	459AA55
32	459AA56
40	459AA57
50	459AA59
63	459AA61
75	459AA63



Note: for sale in multiples of 10.

PCP SHROUD

Size	Ref. No.
16/20S	401AA02
20	401AA03
25	401AA05
32	401AA06
40	401AA07
50S/50	401AA09
63S/63	401AA11
75S/75	401AA13
20S BARRIER	401AA22



Note: This Product is for sale in multiples of 10

BRASS EARTH TAG

Size	Ref. No.
16	428ET51
20	428ET53
25	428ET55
32	428ET56
40	428ET57
50	428ET59
63	428ET61
75	428ET63
85/90	428ET65
100	428ET66
110	428ET67



Note: for sale in multiples of 10.

ALUMINIUM EARTH TAG

Size	Ref. No.
25	458ET55
32	458ET56
40	458ET57
50	458ET59
63	458ET61
75	458ET63



Note: for sale in multiples of 10.

ACCESSORY KITS

For use with A, B, C & E Type brass glands. (Includes PVC Shroud, Nylon Sealing Washer, Brass Earth Tag & Brass Locknut)

Size	Ref. No.
16	KA16M
20SS	KA20SSM
20S	KA20M
25	KA25M
32	KA32M
40	KA40M
50	KA50M
63	KA63M
75	KA75M

INSULATED GLAND ADAPTOR EExd IIC

Size	Ref. No.
20	481AA53
25	481AA55
32	481AA56
40	481AA57
50	481AA59
63	481AA61
75	481AA63
85	481AA64



Other accessories, including steel locknuts, LSOH and PVC shrouds and sealing washers can be purchased separately upon application.

BICON HAZARDOUS AREA GLAND KITS

E1WF EExd IIC & EExe II GLAND KIT FOR STEEL WIRE ARMoured CABLE

includes Gland, Brass Backnut, PVC Shroud, Brass Earth Tag and Nylon Sealing Washer.

Size	Ref. No.
20SS	KCA47271
20S	KCA47252
20	KCA47253
25	KCA47255
32	KCA47256
40	KCA47257
50S	KCA47258
50	KCA47259
63S	KCA47260
63	KCA47261
75S	KCA47262
75	KCA47263



E1XF EExd IIC & EExe II GLAND KIT FOR WIRE BRAIDED CABLE

Includes Gland, Brass Backnut, PVC Shroud, Brass Earth Tag and Nylon Sealing Washer.

Size	Ref. No.
20SS	KCA47371
20S	KCA47352
20	KCA47353
25	KCA47355
32	KCA47356
40	KCA47357
50S	KCA47358
50	KCA47359
63S	KCA47360
63	KCA47361
75S	KCA47362
75	KCA47363



A2EX EExd IIC & EExe II GLAND KIT FOR UNARMoured AND BRAIDED CABLE

Includes gland, Brass Backnut and PVC Shroud.

Size	Ref. No.
20SS	A2EX20SSK
20S	A2EX20SK
20	A2EX20K
25	A2EX25K
32	A2EX32K
40	A2EX40K
50	A2EX50K
63	A2EX63K
75S	A2EX75SK
75	A2EX75K



Gland kits up to size 25 contain 2 sets of glands and accessories, larger kits contain 1 set.

BICON HAZARDOUS AREA GLANDS

E1WF EExe IIC & EExe II GLAND FOR STEEL WIRE ARMoured CABLE

Size	Ref. No.
16	472AA51
20SS	472AA71
20S	472AA52
20	472AA53
25	472AA55
32	472AA56
40	472AA57
50S	472AA58
50	472AA59
63S	472AA60
63	472AA61
75S	472AA62
75	472AA63
85	472AA64



E1XF EExd IIC & EExe II GLAND FOR WIRE BRAIDED CABLE

Size	Ref. No.
16	473AA51
20SS	473AA71
20S	473AA52
20	473AA53
25	473AA55
32	473AA56
40	473AA57
50S	473AA58
50	473AA59
63S	473AA60
63	473AA61
75S	473AA62
75	473AA63
85	473AA64



A2EX EExe II C & EExe II GLAND FOR UNARMoured AND BRAIDED CABLE

Deluge proof gland IP68.

Size	Ref. No.
16	A2EX16
20SS	A2EX20SS
20S	A2EX20S
20	A2EX20
25	A2EX25
32	A2EX32
40	A2EX40
50	A2EX50
63	A2EX63
75S	A2EX75S
75	A2EX75



RTLFL GLAND EExd IIC - EExe II FOR OCMA AND EEMUA STEEL WIRE ARMoured LEAD CABLE

Size	Ref. No.
20S	475AA51
20	475AA52
25S	475AA53
25	475AA54
32S	475AA55
32	475AA56
40	475AA57
50SA	475AA58
50S	475AA59
50A	475AA60
50	475AA61
63SA	475AA62
63S	475AA63
63A	475AA64
63	475AA65
75SA	475AA66
75S	475AA67
75A	475AA68
75	475AA69



BARR-W EExd IIC GLAND (EXPLOSION PROOF) FOR STEEL WIRE ARMoured CABLE

Size	Ref. No.
20S	424TW52
20	424TW53
25	424TW55
32	424TW56
40	424TW57
50	424TW59
63	424TW61
75	424TW63
85	424TW64



BARR-X EExd IIC GLAND (EXPLOSION PROOF) FOR WIRE BRAIDED CABLE

Size	Ref. No.
20S	424TX52
20	424TX53
25	424TX55
32	424TX56
40	424TX57
50	424TX59
63	424TX61
75	424TX63
85	424TX64



E1XF EExd IIC & EExe II GLAND FOR WIRE BRAIDED CABLE

To IP67.

Size	Ref. No.
16	473SX51
20SS	473SX71
20S	473SX52
20	473SX53
25	473SX55
32	473SX56
40	473SX57
50S	473SX58
50	473SX59
63S	473SX60
63	473SX61



BARR-A EExd IIC GLAND (EXPLOSION PROOF) FOR UNARMoured CABLE

Size	Ref. No.
20	424TA53
25	424TA55
32	424TA56
40	424TA57
50	424TA59
63	424TA61
75	424TA63
85	424TA64



EXCEL PLUS EExd IIC & EExe II GLAND FOR ALL ARMoured CABLE TYPES

Eg. steel wire, steel tape and braided armoured cables. Deluge proof & IP67.

Size	Ref. No.
16	493AB51
20SS	493AB71
20S	493AB52
20	493AB53
25	493AB55
32	493AB56
40	493AB57
50	493AB59
63	493AB61
75	493AB63



BARR-Pb EExd IIC GLAND (EXPLOSION PROOF) FOR OCMA AND EEMUA STEEL WIRE ARMoured CABLE

Size	Ref. No.
20S	424TP52
20	424TP53
25	424TP55
32	424TP56
40	424TP57
50	424TP59
63	424TP61
75	424TP63
85	424TP64



Cleats & Cable Fixings

Section

Prysmian Components offers a complete selection of cable cleats and fixing accessories to suit the majority of L.V., M.V. and H.V. cables, offering the user the ability to match individual site requirements with the most appropriate product for their application. They are also designed and manufactured to the highest performance standards. To compliment the range of cleats, we also offer a number of specially designed accessories.

When it is necessary to select cleats for an installation, there are six key elements to be considered; (I) Mechanical load, (II) Cable run - horizontal / vertical, (III) Environment, (IV) Operating temperature / LSOH requirements, (V) Compatibility with the support structure, (VI) Cable diameter accommodation. A combination of these elements is required to select the most appropriate cleat.

The use of Prysmian Components' cable cleats result in a safe and efficient installation where the cables reach their optimum rating and provide the necessary restraint to the cables in the event of a short circuit fault occurring in the system. They also allow a neat and orderly arrangement of cables which is aesthetically pleasing.



BICON CABLE CLEATS

TELECLEATS (BLACK POLYTHENE/LSOH)

Notes apply to LSOH version only:
LUL approved.
Designed for use with Afumex®, LSOH and LSF cables



Cable Diameter mm	Polythene Ref. No.	LSOH Ref. No.
10.5 - 14.5	385AA01	385LSF01
12.2 - 16.7	385AA02	385LSF02
14.6 - 19.8	385AA03	385LSF03
17.7 - 24.0	385AA04	385LSF04
21.7 - 28.5	385AA05	385LSF05
26.2 - 34.2	385AA06	385LSF06
31.9 - 41.6	385AA07	385LSF07
39.3 - 51.1	385AA08	385LSF08

HEAVY DUTY HOOK CLEATS (NYLON/LSOH)

Notes apply to LSOH version only:
Designed for use with Afumex®, LSOH and LSF cables



Cable Diameter mm	NYLON Ref. No.	LSOH Ref. No.
25 - 35	384AA01	384LSF01
34 - 44	384AA02	384LSF02
43 - 53	384AA03	384LSF03
52 - 62	384AA04	384LSF04
61 - 71	384AA05	384LSF05
70 - 80	384AA06	384LSF06

HOOK CLEAT (ALUMINIUM)

Cable Diameter mm	Ref. No.
19 - 22	371AA03
22 - 25	371AA04
25 - 32	371AA05
32 - 38	371AA06
38 - 44	371AA07
44 - 51	371AA08
51 - 57	371AA09
57 - 64	371AA10
64 - 70	371AA11
70 - 76	371AA12



CLAW CLEATS (ALUMINIUM/ALUMINIUM EPOXY COATED)



Cable Diameter mm	Aluminium Ref. No.	Epoxy Ref. No.
10 - 13	370BA01	370BB01
13 - 16	370BA02	370BB02
16 - 19	370BA03	370BB03
19 - 22	370BA04	370BB04
22 - 25	370BA05	370BB05
25 - 32	370BA06	370BB06
32 - 38	370BA07	370BB07
38 - 44	370BA08	370BB08
44 - 51	370BA09	370BB09

CLAW CLEATS (CAST IRON/CAST IRON EPOXY COATED)

Cast Iron claw cleats are hot dip galvanized and are designed for use with FP400 and FP600 cables.



Cable Diameter mm	Cast Iron Ref. No.	Epoxy Ref. No.
10 - 13	370CG01	-
13 - 16	370CG02	-
16 - 19	370CG03	-
18 - 22	370CG04	-
21 - 26	370CG05	-
25 - 32	370CG06	370CE06
31 - 38	370CG07	370CE07
36 - 46	370CG08	370CE08
44 - 54	370CG09	370CE09

2 BOLT CLEAT (HIGH DENSITY POLYTHENE/LSOH)

Notes apply to LSOH version only:
LUL Approved.
Designed for use with Afumex®, LSOH and LSF cables



Cable Diameter mm	Polythene Ref. No.	LSOH Ref. No.
50 - 58	374AA01	374LSF01
56 - 64	374AA02	374LSF02
62 - 70	374AA03	374LSF03
68 - 76	374AA04	374LSF04
74 - 82	374AA05	374LSF05
80 - 88	374AA06	374LSF06
86 - 94	374AA07	374LSF07

2 BOLT CLEAT (ALUMINIUM/ALUMINIUM EPOXY COATED)



Cable Diameter mm	Aluminium Ref. No.	Epoxy Ref. No.
51 - 57	370BA10	370BB10
57 - 64	370BA11	370BB11
64 - 70	370BA12	370BB12
70 - 76	370BA13	370BB13
76 - 83	370BA14	370BB14
83 - 89	370BA15	370BB15
89 - 95	370BA16	370BB16
95 - 101	370BA17	370BB17
101 - 108	370BA18	370BB18
108 - 114	370BA19	370BB19

2 BOLT CLEAT (CAST IRON/CAST IRON EPOXY COATED)

Cast Iron 2 bolt cleats are hot dip galvanized and are designed for use with FP400 and FP600 cables.



Cable Diameter mm	Cast Iron Ref. No.	Epoxy Ref. No.
51 - 57	370CG10	370CE10
57 - 64	370CG11	370CE11
64 - 70	370CG12	370CE12
70 - 76	370CG13	370CE13
76 - 83	370CG14	370CE14

MULTICLEAT PLUS RANGE

The Multicleat/Multistrap Plus system utilises a strap with rounded edges offering safe, fast installation to the user whilst maintaining excellent performance characteristics.

MULTICLEAT PLUS - STANDARD & HEAVY DUTY (ALUMINIUM BASE)

Suitable for single or trefoil cable formations.

Single Cable Dimensions (Min/Max) mm	Standard Ref. No.	Heavy Duty Ref. No.
85 - 110	-	378AB29
105 - 120	378AB09	378AB59



Trefoil Cable Dimensions (Min/Max) mm	Standard Ref. No.	Heavy Duty Ref. No.
24 - 34	378AB01	378AB51
30 - 41	378AB02	378AB52
37 - 47	378AB03	378AB53
43 - 54	378AB04	378AB54
50 - 60	378AB05	378AB55
56 - 67	378AB06	378AB56
63 - 73	378AB07	378AB57
69 - 80	378AB08	378AB58
72 - 85	-	378AB36
82 - 95	-	378AB37
92 - 105	-	378AB38
102 - 115	-	378AB39
112 - 125	-	378AB40
122 - 135	-	378AB41
132 - 145	-	378AB42

MULTICLEAT PLUS - STANDARD & HEAVY DUTY (ALUMINIUM BASE - EPOXY COATED)

Suitable for single or trefoil cable formations.

Single Cable Dimensions (Min/Max) mm	Standard Ref. No.	Heavy Duty Ref. No.
85 - 110	-	378AD29
105 - 120	378AD09	378AD59



Cable Diameter (Min/Max) mm	Standard Ref. No.	Heavy Duty Ref. No.
24 - 34	378AD01	378AD51
30 - 41	378AD02	378AD52
37 - 47	378AD03	378AD53
43 - 54	378AD04	378AD54
50 - 60	378AD05	378AD55
56 - 67	378AD06	378AD56
63 - 73	378AD07	378AD57
69 - 80	378AD08	378AD58
102 - 115	-	378AD39

MULTICLEAT PLUS - STANDARD & HEAVY DUTY (STAINLESS STEEL BASE - SINGLE BOLT)

Suitable for single or trefoil cable formations.

Single Cable Dimensions (Min/Max) mm	Standard Ref. No.	Heavy Duty Ref. No.
105 - 120	378PF09	378PF59



Trefoil Cable Dimensions (Min/Max) mm	Standard Ref. No.	Heavy Duty Ref. No.
24 - 34	378PF01	378PF51
30 - 41	378PF02	378PF52
37 - 47	378PF03	378PF53
43 - 54	378PF04	378PF54
50 - 60	378PF05	378PF55
56 - 67	378PF06	378PF56
63 - 73	378PF07	378PF57
69 - 80	378PF08	378PF58

MULTISTRAP PLUS - STANDARD & HEAVY DUTY

For use as an intermediate support between multiclears.

Trefoil Cable Dimensions (Min/Max) mm	Standard Ref. No.	Heavy Duty Ref. No.
24 - 34	377AB01	377AB51
30 - 41	377AB02	377AB52
37 - 47	377AB03	377AB53
43 - 54	377AB04	377AB54
50 - 60	377AB05	377AB55
56 - 67	377AB06	377AB56
63 - 73	377AB07	377AB57
69 - 80	377AB08	377AB58
72 - 85		377AB36
82 - 95		377AB37
92 - 105		377AB38
102 - 115		377AB39
112 - 125		377AB40
122 - 135		377AB41
132 - 145		377AB42



LSOH LINERS

For Styles	Ref. No.
01-04 inc. / 51-54 inc.	377LSF01
05-09 inc. / 36-37 inc. / 55-59 inc.	377LSF02



TREFOIL SINGLE & TWO BOLT CLEATS (ALUMINIUM)



Cable Diameter mm	Single Bolt Ref. No.	Two Bolt Ref. No.
24.0 - 25.0	376AC01	376AB01
25.0 - 27.0	376AC02	376AB02
27.0 - 28.0	376AC03	376AB03
28.0 - 30.0	376AC04	376AB04
30.0 - 32.0	376AC05	376AB05
32.0 - 34.0	376AC06	376AB06
34.0 - 35.0	376AC07	376AB07
35.0 - 36.0	376AC08	376AB08
36.0 - 38.0	376AC09	376AB09
38.0 - 40.0	376AC10	376AB10
40.0 - 41.0	376AC11	376AB11
41.0 - 43.0	376AC12	376AB12
43.0 - 44.0	376AC13	376AB13
44.0 - 46.0	376AC14	376AB14
46.0 - 48.0	376AC15	376AB15
48.0 - 49.0	376AC16	376AB16
49.0 - 51.0	376AC17	376AB17
51.0 - 53.0	376AC18	376AB18
53.0 - 54.0	376AC19	376AB19
54.0 - 55.5	376AC20	376AB20
55.5 - 57.0	376AC21	376AB21
57.0 - 59.0	376AC22	376AB22
59.0 - 60.0	376AC23	376AB23
60.0 - 62.0	376AC24	376AB24
62.0 - 63.5	376AC25	376AB25
63.5 - 65.0	376AC26	376AB26
65.0 - 66.5	376AC27	376AB27
66.5 - 68.0	376AC28	376AB28
73.0 - 74.5	376AC32	376AB32

BICON CABLE CLEAT ACCESSORIES

M10 STUDS (ZINC PLATED)

Including nut & washer.

Size	Ref. No.
M10 x 145mm	380AH27
M10 x 155mm	380AH29



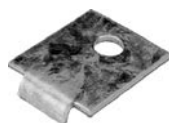
CABLE TIES - BLACK & NATURAL (NYLON)



Tie Dimensions mm	Black Ref. No.	Natural Ref. No.
96 x 2.5	BB18S	BN18S
150 x 3.6	BB40S	BN40S
203 x 3.2	BB40L	BN40L
280 x 4.8	BB50S	BN50A
190 x 4.8	BB50A	BN50S
368 x 4.8	BB50L	BN50L
380 x 7.6	BB120S	BN120S
550 x 7.6	BB120L	-

ADAPTOR PLATE (MILD STEEL)

Size	Ref. No.
M6 Galvanised	380AG01
M10 Galvanised	380AG02
M12 Galvanised	380AG03
M10 Epoxy Coated	380AG32



PACKING PIECE (ALUMINIUM/ALUMINIUM EPOXY COATED)

Size	Ref. No.
Aluminium	389AC03
Aluminium (Epoxy Coated)	389AC04



FP FIREFIX™

The fastest way to clip FP cables using gas nailing technology. System for use with Pulsa 700E gas nailing tool - Tool sold separately.

UFPNF01R/W kits contain:

500 FP Firefix™ clips, 500 nails and 1 fuel cell

UFPNF02R/W and UFPNF04R/W kits contain:

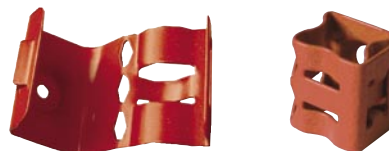
500 FP Firefix™ clips, 500 nails, 5 adaptors and 1 fuel cell

Single Clip Selection

Cable	No. Cables	Size (mm ²)	Sheath Colour	FP FIREFIX™ Kit Ref.
FP200 Gold®	1	2c x 1.5	Red	UFPNF01R
FP200 Gold®	1	2c x 1.5	White	UFPNF01W

Double Clip Selection

FP200 Gold®	2	2c x 1.5	Red	UFPNF02R
FP200 Gold®	2	2c x 1.5	White	UFPNF02W
FP200 Gold®	2	3c x 1.0	Red	UFPNF02R
FP200 Gold®	2	3c x 1.0	White	UFPNF02W
FP200 Gold®	2	3c x 1.5	Red	UFPNF04R
FP200 Gold®	2	3c x 1.5	White	UFPNF04W
FP200 Gold®	2	4c x 1.0	Red	UFPNF04R
FP200 Gold®	2	4c x 1.0	White	UFPNF04W
FP Plus™	1	2c x 1.5	Red	UFPNF04R
FP Plus™	1	2c x 1.5	White	UFPNF04W



Cable Connectors & Tooling

Section

3

Prysmian Components offers a wealth of experience and expertise in the design and manufacture of power cable connectors and tooling. The range includes pre-insulated connectors plus low and medium voltage connectors for both copper and aluminium.

A range of tooling ensures precisely matched and accurate installations, which compliment the compression termination 'system'. The tooling range consists of:

- Cable preparation tools
- Stripping tools
- Cutting tools
- Hand non-ratchet crimping tools
- Hand ratchet crimping tools
- Hand Hydraulic compression tooling
- Remote Hydraulic compression tooling

The range of connectors has been designed, manufactured and tested to conform to the stringent performance requirements of BS4579. Thorough testing on our extensive technical laboratory at Prescott, ensures that you receive the best connector for your application every time.

COMPRESSION CONNECTORS

Easy Entry - Pre-insulated connectors 0.5 - 1.5mm² Red

The most comprehensive of small terminal ranges comprising of a variety of styles. The PVC terminal sleeve is tapered internally to allow ease of insertion of conductors and is rated at 80°C operating temperature. Disconnectable terminals such as 'bullets' and 'push-ons' incorporate an insulation grip in the entry portion on the connector to protect the cable against damage when making disconnections.

COMPRESSION CONNECTORS - RINGS (RED)

Cable Size mm ²	Stud Size mm ²	Ref. No.
0.5 - 1.5	3.0	BER3PAK
0.5 - 1.5	3.5	BER35PAK
0.5 - 1.5	4.0	BER4PAK
0.5 - 1.5	5.0	BER5PAK
0.5 - 1.5	6.0	BER6PAK
0.5 - 1.5	8.0	BER8PAK
0.5 - 1.5	10.0	BER10PAK



COMPRESSION CONNECTORS - FORKS (RED)

Cable Size mm ²	Stud Size mm ²	Ref. No.
0.5 - 1.5	3.0	BER3FPAK
0.5 - 1.5	3.5	BER35FPAK
0.5 - 1.5	4.0	BER4FPAK
0.5 - 1.5	4.0	BER4FSPAK
0.5 - 1.5	5.0	BER5FPAK
0.5 - 1.5	6.0	BER6FPAK
0.5 - 1.5	3.5	BER35FGPAK



COMPRESSION CONNECTORS - PIN (RED)

Cable Size mm ²	Blade Length	Ref. No.
0.5 - 1.5	12.0	BER10PPAK



COMPRESSION CONNECTORS - BLADES (RED)

Cable Size mm ²	Blade Length	Ref. No.
0.5 - 1.5	9.0	BER10BPAK
0.5 - 1.5	14.6	BER13BPAK
0.5 - 1.5	16.0	BER13BNPAK
0.5 - 1.5	18.5	BER17BPAK



COMPRESSION CONNECTORS - HOOKS (RED)

Cable Size mm ²	Blade Length	Ref. No.
0.5 - 1.5	17.0	BER17HPAK



COMPRESSION CONNECTORS - BUTT SPLICES (RED)

Cable Size mm ²	Ref. No.
0.5 - 1.5	BERSPAK



COMPRESSION CONNECTORS - PUSH-ONS (RED)

Cable Size mm ²	For Tab Size	Ref. No.
0.75 - 1.5	2.8 x 0.5	BDR285FPAK
0.75 - 1.5	2.8 x 0.8	BDR288FPAK
0.75 - 1.5	4.8 x 0.5	BDR485FPAK
0.75 - 1.5	4.8 x 0.8	BDR488FPAK
0.75 - 1.5	6.3 x 0.8	BDR63FPAK
0.75 - 1.5	6.3 x 0.8	BDR63FEPAK
0.75 - 1.5	6.3 x 0.8	BDR63MPAK
0.75 - 1.5	6.3 x 0.8	BDR63FMPAK



COMPRESSION CONNECTORS - MALE BULLET (RED)

Cable Size mm ²	Bullet Size mm	Ref. No.
0.75 - 1.5	4.0	BDR4BMPAK



COMPRESSION CONNECTORS - FEMALE BULLET (RED)

Cable Size mm ²	Bullet Size mm	Ref. No.
0.75 - 1.5	4.0	BDR4BFPK



Note: Suffix 'PAK' denotes bags of 100.

COMPRESSION CONNECTORS

Easy Entry - Pre-insulated connectors 1.0 - 2.5mm² Blue

COMPRESSION CONNECTORS - RINGS (BLUE)

Cable Size mm ²	Bullet Size mm	Ref. No.
1.0 - 2.5	3.0	BEB3PAK
1.0 - 2.5	3.5	BEB35PAK
1.0 - 2.5	4.0	BEB4PAK
1.0 - 2.5	5.0	BEB5PAK
1.0 - 2.5	6.0	BEB6PAK
1.0 - 2.5	8.0	BEB8PAK
1.0 - 2.5	10.0	BEB10PAK
1.0 - 2.5	12.0	BEB12PAK



COMPRESSION CONNECTORS - FORK (BLUE)

Bullet Size mm ²	Ref. No.
3.0	BEB3FPAK
3.5	BEB35FPAK
4.0	BEB4FPAK
4.0	BEB4FNPAK
4.0	BEB4FSPAK
5.0	BEB5FPAK
3.5	BEB35FGPAK
3.0	BEB3FFPAK
4.0	BEB4FFPAK



COMPRESSION CONNECTORS - PIN (BLUE)

Cable Size mm ²	Blade Length mm	Ref. No.
1.0 - 2.5	12.0	BEB10PPAK



COMPRESSION CONNECTORS - BLADES (BLUE)

Cable Diameter mm	Blade Length mm	Ref. No.
1.0 - 2.5	9.0	BEB10BPAK
1.0 - 2.5	10.5	BEB10BNPAK
1.0 - 2.5	13.0	BEB13BPAK
1.0 - 2.5	18.5	BEB17BPAK



COMPRESSION CONNECTORS - HOOKS (BLUE)

Cable Size mm ²	Blade Length mm ²	Ref. No.
1.0 - 2.5	17.0	BEB17HPAK



COMPRESSION CONNECTORS - BUTT SPLICES (BLUE)

Cable Size mm ²	Ref. No.
1.0 - 2.5	BEBSPAK



COMPRESSION CONNECTORS - PUSH-ONS (BLUE)

Cable Size mm ²	For Tab Size	Ref. No.
1.5 - 2.5	4.8 x 0.5	BDB485FPAK
1.5 - 2.5	4.8 x 0.8	BDB488FPAK
1.5 - 2.5	6.3 x 0.8	BDB63FPAK
1.5 - 2.5	6.3 x 0.8	BDB63FEPAK
1.5 - 2.5	8.5 x 0.8	BDB85FPAK
1.5 - 2.5	6.3 x 0.8	BDB63MPAK
1.5 - 2.5	6.3 x 0.8	BDB63FMPAK



COMPRESSION CONNECTORS - MALE BULLET (BLUE)

Cable Size mm ²	Bullet Size mm	Ref. No.
1.5 - 2.5	4.0	BDB4BMPAK
1.5 - 2.5	5.0	BDB5BMPAK



COMPRESSION CONNECTORS - FEMALE BULLET (BLUE)

Cable Size mm ²	Bullet Size mm	Ref. No.
1.5 - 2.5	4.0	BDB4BFPAK
1.5 - 2.5	5.0	BDB5BFPAK



Note: Suffix 'PAK' denotes bags of 100.

BDI CON COMPRESSION CONNECTORS

Easy Entry - Pre-insulated connectors 4.0 - 6.0mm² Yellow

COMPRESSION CONNECTORS - RINGS (YELLOW)

Cable Size mm ²	Stud Size mm	Ref. No.
4.0 - 6.0	3.0	BEY3PAK
4.0 - 6.0	4.0	BEY4PAK
4.0 - 6.0	5.0	BEY5PAK
4.0 - 6.0	6.0	BEY6PAK
4.0 - 6.0	8.0	BEY8PAK
4.0 - 6.0	10.0	BEY10PAK
4.0 - 6.0	12.0	BEY12PAK



COMPRESSION CONNECTORS - FORK (YELLOW)

Cable Size mm ²	Bullet Size mm	Ref. No.
4.0 - 6.0	4.0	BEY4FPAK
4.0 - 6.0	5.0	BEY5FPAK
4.0 - 6.0	6.0	BEY6FPAK



COMPRESSION CONNECTORS - PIN (YELLOW)

Cable Size mm ²	Blade Length mm	Ref. No.
4.0 - 6.0	14.0	BEY10PPAK



COMPRESSION CONNECTORS - BLADES (YELLOW)

Cable Size mm ²	Blade Length mm	Ref. No.
4.0 - 6.0	10.0	BEY10BPAK



COMPRESSION CONNECTORS - BUTT SPLICES (YELLOW)

Cable Size mm ²	Ref. No.
4.0 - 6.0	BEYSPAK



COMPRESSION CONNECTORS - PUSH - ONS (YELLOW)

Cable Size mm ²	For Tab Size	Ref. No.
4.0 - 6.0	6.3 x 0.8	BDY63FPAK
4.0 - 6.0	6.3 x 0.8	BDY63FEPAK
4.0 - 6.0	9.5 x 1.2	BDY95FPAK



COMPRESSION CONNECTORS - END CONNECTOR

Cable Size mm ²	Stud Size mm ²	Ref. No.
1.5 - 2.5	3.0	BEYCEPAK



Note: Suffix 'PAK' denotes bags of 100.

BT CON TUBE TERMINALS FOR COPPER CONDUCTORS 1 - 1000mm²

A range of terminals for both stranded or flexible annealed copper conductors. Manufactured from high conductivity copper and tin plated, these terminals incorporate a sight hole for visual inspection of conductor insertion. A variety of single stud hole sizes are available and can be compressed with either an indent or hexagonal compression system. (Please refer to technical catalogue for die set recommendations)

TUBE TERMINALS FOR COPPER CONDUCTORS

Stranded Cu cable size mm ²	Stud Size mm	Ref. No.
0.75 - 1.5	3.5	BT1C35
0.75 - 1.5	4.0	BT1C4
0.75 - 1.5	5.0	BT1C5
1.5 - 2.5	3.5	BT2C35
1.5 - 2.5	4.0	BT2C4
1.5 - 2.5	5.0	BT2C5
1.5 - 2.5	6.0	BT2C6
1.5 - 2.5	8.0	BT2C8
4.0 - 6.0	3.5/4	BT6C354
4.0 - 6.0	5.0	BT6C5
4.0 - 6.0	6.0	BT6C6
4.0 - 6.0	8.0	BT6C8
4.0 - 6.0	10.0	BT6C10
10	5.0	BT10C5
10	6.0	BT10C6
10	8.0	BT10C8
10	10.0	BT10C10
10	12.0	BT10C12
16	5.0	BT16C5
16	6.0	BT16C6
16	8.0	BT16C8
16	10.0	BT16C10
16	12.0	BT16C12
25	5.0	BT25C5
25	6.0	BT25C6
25	8.0	BT25C8
25	10.0	BT25C10
25	12.0	BT25C12
35	6.0	BT35C6
35	8.0	BT35C8
35	10.0	BT35C10
35	12.0	BT35C12
50	6.0	BT50C6
50	8.0	BT50C8
50	10.0	BT50C10
50	12.0	BT50C12



Stranded Cu cable size mm ²	Stud Size mm	Ref. No.
70	6.0	BT70C6
70	8.0	BT70C8
70	10.0	BT70C10
70	12.5	BT70C12
70	16.0	BT70C16
95	8.0	BT95C8
95	10.0	BT95C10
95	12.0	BT95C12
120	10.0	BT120C10
120	12.0	BT120C12
120	16.0	BT120C16
150	10.0	BT150C10
150	12.0	BT150C12
150	16.0	BT150C16
150	-	BT150CU
185	10.0	BT185C10
185	12.0	BT185C12
185	6.0	BT185C16
185	20.0	BT185C20
185	-	BT185CU
240	10.0	BT240C10
240	12.0	BT240C12
240	16.0	BT240C16
240	20.0	BT240C20
240	-	BT240CU
300	12.0	BT300C12
300	16.0	BT300C16
300	20.0	BT300C20
300	-	BT300CU
400	16.0	BT400C16
400	20.0	BT400C20
400	-	BT400CU
500	16.0	BT500C16
500	-	BT500CU
630	16.0	BT630C16
630	20.0	BT630C20
630	-	BT630CU
800	20.0	BT800C20
800	-	BT800CU



BT CON SPLICE CONNECTORS FOR COPPER CONDUCTORS 1 - 1000mm²

SPLICE CONNECTORS

High conductivity copper, tin plated, end-to-end splices incorporate a conductor stop to ensure that the cores are equally inserted. Sizes up to 6mm are supplied in bags of 100 and have suffix 'PAK'.

Stranded Cu cable size mm ²	Ref. No.
1.5	BT1CSPAK
2.5	BT2CSPAK
6	BT6CSPAK
10	BT10CS
16	BT16CS
25	BT25CS
35	BT35CS
50	BT50CS
70	BT70CS
95	BT95CS
120	BT120CS
150	BT150CS
185	BT185CS
240	BT240CS
300	BT300CS
400	BT400CS
500	BT500CS
630	BT630CS
800	BT800CS



BT CON 2 AND 4 BOLT TERMINALS FOR COPPER CONDUCTORS

2 BOLT TERMINALS

These terminals feature an extended palm to accommodate two bolt holes. They are also offered with blank palms for drilling on site (type 'CU').

Stranded Cu cable size mm	Stud Size mm	Hole Centres mm	Ref. No.
95	2 x 8	20.6	BT95C8B2
120	2 x 8	25.4	BT120C8B2
150	2 x 12	38.1 - 44.5	BT150C12B2
185	2 x 12	38.1 - 44.5	BT185C12B2
240	2 x 12	38.1 - 44.5	BT240C12B2
240	2 x blank		BT240CUB2
300	2 x 12	38.1 - 44.5	BT300C12B2
800	2 x 12	38.1 - 44.5	BT800C12B2



4 BOLT TERMINALS

These terminals are manufactured from seamless copper tube and will withstand the most arduous service conditions. Manufactured from high conductivity copper and tin plated, they are designed to fit the most common transformer arrangements.



Stranded Cu cable size mm	Stud Size mm	Hole Centres mm	Ref. No.
300	8	25 x 35	BT300C8B4
400	8	25 x 35	BT400C8B4
500	8	25 x 35	BT500C8B4
630	8	25 x 35	BT630C8B4
800	8	25 x 35	BT800C8B4
1000	8	25 x 35	BT1000C8B4

BT CON CEETAP CONNECTORS

CEETAP CONNECTORS (6 - 240mm)

CEETAP connectors offer a versatile means of tapping onto annealed stranded or flexible copper conductors including copper busbar and earthing systems. The CEETAP is manufactured from heavy wall copper extrusion and provides excellent continuity and reliability.



Main Conductor mm ²	Tap Conductor mm ²	Ref. No.
6	6	TC2C
10	2.5 to 6	
10	10	TC3C
16	2.5 to 10	
16	16	TC4C
25	4 to 10	
25	16	TC5C
35	4	
25	25	TC6C
35	6 to 25	
35	35	TC7C
50	16 to 25	TC8C
50	35 to 50	TC9C
70	16	
70 to 95	16 to 35	TC10C
70 to 95	50 to 70	TC11C
95	95	TC12C
120	35 to 70	TC13C
120	95 to 120	TC14C
150	35 to 150	
185 to 240	50 to 95	TC16C
185 to 240	120 to 240	TC17C

MV STRAIGHT SPLICES

These splices are designed to meet the requirements of MV underground joint specifiers worldwide. The through barrel incorporates tapered ends and a central sight hole.

Stranded Copper Cable Size mm ²	Ref. No.
25	BTH25CS
35	BTH35CS
50	BTH50CS
70	BTH70CS
95	BTH95CS
120	BTH120CS
150	BTH150CS
185	BTH185CS
240	BTH240CS
300	BTH300CS
400	BTH400CS
500	BTH500CS
630	BTH630CS



MV STRAIGHT SPLICES - WATER BLOCKED

These splices incorporate a solid central waterblock to provide a moisture seal when jointing MIND paper insulated to polymeric cables.

Stranded Copper Cable Size mm ²	Ref. No.
50	BTHW50CS
70	BTHW70CS
95	BTHW95CS
120	BTHW120CS
150	BTHW150CS
185	BTHW185CS
240	BTHW240CS
300	BTHW300CS
400	BTHW400CS
500	BTHW500CS
630	BTHW630CS



MV REDUCER SPLICES - WATER BLOCKED

These MV splices allow copper conductors of differing cross sectional areas to be joined in a neat waterblocked design.

Stranded Copper Cable Size mm ²	Ref. No.
120/95	BTHW12095CS
185/95	BTHW18595CS
185/120	BTHW185120CS
185/150	BTHW185150CS
240/150	BTHW240150CS
240/185	BTHW240185CS
300/185	BTHW300185CS
300/240	BTHW300240CS
400/240	BTHW400240CS
400/300	BTHW400300CS
500/240	BTHW500240CS
500/300	BTHW500300CS
500/400	BTHW500400CS
630/400	BTHW630400CS



MV WATERBLOCKED TERMINALS - SINGLE HOLE

These MV connectors are manufactured from thick wall copper tube and contain a waterblock seal, made from polyurethane resin at the base of the compression barrel. Knurl markings on the barrel indicate positions for crimping. The extended barrel and smooth compressions are particularly suitable for the application of the protective sleeving.

Stranded Copper Cable Size mm ²	Stud Size mm	Ref. No.
16	10	BTHW16C10
25	10	BTHW25C10
25	12	BTHW25C12
35	10	BTHW35C10
35	12	BTHW35C12
50	10	BTHW50C10
50	12	BTHW50C12
70	10	BTHW70C10
70	12	BTHW70C12
95	10	BTHW95C10
95	12	BTHW95C12
95	16	BTHW95C16
120	12	BTHW120C12
120	16	BTHW120C16
150	12	BTHW150C12
150	16	BTHW150C16
185	12	BTHW185C12
185	16	BTHW185C16
240	12	BTHW240C12
240	16	BTHW240C16
240	20	BTHW240C20
300	12	BTHW300C12
300	16	BTHW300C16
300	20	BTHW300C20
400	12	BTHW400C12
400	16	BTHW400C16
400	20	BTHW400C20
500	12	BTHW500C12
500	16	BTHW500C16
500	20	BTHW500C20
630	16	BTHW630C16
630	20	BTHW630C20



MV WATERBLOCKED TERMINALS - DOUBLE HOLE

Features of these connectors are as the single hole but incorporate an extended palm to accommodate two bolt fixings.



Stranded Cu cable size mm ²	Stud Size mm	Hole Centres mm	Ref. No.
70	12x2	38 - 44.5	BTHW70C12D
95	12x2	38 - 44.5	BTHW95C12D
120	12x2	38 - 44.5	BTHW120C12D
150	12x2	38 - 44.5	BTHW150C12D
185	12x2	38 - 44.5	BTHW185C12D
240	12x2	38 - 44.5	BTHW240C12D
300	16x2	38	BTHW300C16D
400	16x2	38	BTHW400C16D
500	16x2	38	BTHW500C16D
630	16x2	38	BTW630C16B2

BI CON ALUMINIUM CONNECTORS FOR LV APPLICATIONS

CONNECTORS FOR SINGLE CORE CIRCULAR SAC CABLELUG (SINGLE HOLE PALM LUG)

Conductor Size mm ²	Stud Size mm	Ref. No.
35	10	BAS35A-10
35	12	BAS35A-12
95, 120	12	BAS95A-12
150	12	BAS150A1-12
185	16	BAS185A-16
300	16	BAS300A-16

CONNECTORS FOR TWO CORE SECTOR SAC CABLELUG (SINGLE HOLE PALM LUG)

Conductor Size mm ²	Stud Size mm	Ref. No.
16	8	BA16A2-8
25	8	BA25A2-8
25	10	BA25A2-10
35	8	BA35A2-8
35	10	BA35A2-10
50	8	BA50A2-8
50	10	BA50A2-10
70	8	BA70A2-8
70	10	BA70A2-10
95	10	BA95A2-10



CONNECTORS FOR THREE CORE SECTOR SAC CABLELUG (SINGLE HOLE PALM LUG)

Conductor Size mm ²	Stud Size mm	Ref. No.
70	12	BA70A3-12B
95	10	BA95A3-10
150	12	BA150A3-12



CONNECTORS FOR FOUR CORE SECTOR SAC CABLELUG (SINGLE HOLE PALM LUG)

Conductor Size mm ²	Stud Size mm	Ref. No.
70	10	BA70A4-10
150	12	BA150A4-12
185	12	BA185A4-12
240	16	BA240A4-16
300	12	BA300A4-12
300	16	BA300A4-16

CONNECTORS FOR STRANDED ALUMINIUM HEXAGONAL COMPRESSION (LV & MV) CABLELUG (SINGLE HOLE PALM)

Conductor Size mm ²	Stud Size mm	Ref. No.
150	12	BAS150A-12
150	16	BAS150A-16
500	16	BAS500A-16

CONNECTORS FOR STRANDED ALUMINIUM DEEP INDENT COMPRESSION (LV & MV) CABLELUG (SINGLE HOLE PALM)

Conductor Size mm ²	Stud Size mm	Ref. No.
120	12	BAP120A-12
150	16	BAP150A-16
185	16	BAP185A-16
240	12	BAP240A-12

CONNECTORS FOR STRANDED ALUMINIUM DEEP INDENT COMPRESSION (LV & MV) CABLELUG (TWO HOLE PALM)

Conductor Size mm ²	Stud Size mm	Ref. No.
185	12	BAP185A12BM
240	12	BAP240A12BM

INSTALLATION TOOLING AND ACCESSORIES - HANDTOOLS (NON RATCHET)

With all compression systems, the safety and quality of a connection is dependent on the use of the correct installation tooling. Optimum performance and maximum reliability can only be achieved consistently if the connector is installed by tooling recommended by Prysmian Components. There are a wide range of tools to choose from, all designed to produce compression joints which meet tensile, resistance and heat cycle requirements.

BM120U HANDTOOL

Non-ratchet single stroke tool which incorporates a single adjustable indent die. The tool has a built in setting plate.

Capacity mm ²	Description	Ref. No.
10 - 120	Uninsulated	BM120U



BMR6GP3 HANDTOOL

General purpose low cost ratchet handtool with three colour coded crimp positions. For use with pre-insulated connectors.

Capacity mm ²	Description	Ref. No.
0.5 - 6.0	Pre-insulated	BMR6GP3



BMR6P3 HANDTOOL

'Comfort handles' ratchet type handtool for frequent use. Low hand load required for operation reduces risk of repetitive strain injury. Compression jaws consist of three colour coded crimp positions for use with pre-insulated connectors.

Capacity mm ²	Description	Ref. No.
0.5 - 6.0	Pre-insulated	BMR6P3



BMR16U3 HANDTOOL

Ratchet type handtool with three crimp positions for use with uninsulated connectors.

Capacity mm ²	Description	Ref. No.
4.0 - 16.0	Uninsulated	BMR16U3



G10TS HYDRAULIC HANDTOOL (Range 10 - 400mm²)

This two-stage hydraulic tool delivers a compressive force of 11.5 tonnes with a quick ram advance. It incorporates a preset audible overload valve to ensure crimp reliability and will accept a wide range of interchangeable die sets. The body and handles of the tool are fully insulated and is supplied complete with vinyl carrying bag and steel die box.

Description	Ref. No.
Handtool (two stage)	G10TS



FP10 HYDRAULIC FOOTPUMP

This two-stage footpump can be used to operate any of the Prysmian Components' heads with an operating pressure of 700 Bar (10,000psi). The two stage design enables the dies to close quickly onto the connector before the high pressure crimping stage automatically commences. An audible overload valve operates at the end of the crimping cycle when the correct pressure has been reached. The FP10 can be supplied on its own or in various kit forms as follows:



Description	Ref. No.
Footpump, Case	FP10
Footpump, Hose & Case	FP10-2
Footpump, Hose & Case & G10 Head	FP10-4

G10 COMPRESSION HEAD (Range 10 - 400mm²)

The 'G' shaped design of this compression head enables it to hook easily over the conductor. It delivers a compressive force of 11.5 tonnes and accepts a wide range of interchangeable dies for use with copper or aluminium connectors.

Description	Ref. No.
Compression Head	G10H



G14H COMPRESSION HEAD (Range 10 - 630mm²)

This 'G' shaped compression head delivers a compressive force of 14 tonnes and can crimp copper connectors up to 630mm² and aluminium connectors up to 400mm². The full range of G10 type dies can be employed when used with a PUADP adaptor.

Description	Ref. No.
Compression Head	G14H



E18HB COMPRESSION HEAD (Range 10 - 630mm²)

This latch head tool delivers a compressive force of approximately 18 tonnes and is ideal for crimping highly compacted copper conductors. The tool is supplied with 3 die sets : 630mm², 500mm² & an adaptor die to carry 'U' dies ranging from 10mm² to 400mm².

Description	Ref. No.
Compression Head	E18HB



E22H COMPRESSION HEAD (Range 150 - 1000mm²)

The latch top of this compression head can be pivoted open by removing one of the retention pins to allow positioning around the conductor. The tool delivers a compressive force of 22 tonnes and will install copper connectors up to 1000mm² and aluminium connectors up to 960mm².

Description	Ref. No.
Compression Head	E22H



BATTERY HYDRAULIC TOOLS AND ACCESSORIES

E10-2000 (RANGE 10 - 400mm²)

Self contained handtool which operates from a built in rechargeable 12kV battery to deliver 10 tonnes of compression with a preset audible blow-off valve. The tool accepts industry standard 'U' dies. The jaws of the tool auto-retract when 10 tonnes of force has been achieved. Supplied with battery, mains charger and durable carrying case.

Description	Ref. No.
Hydraulic Tool	E10-2000



Products In This Section
Are No Longer Available

Sorry For Any Inconvenience

240VC2000

A 240 volt mains charger for the BAT2000 battery.

Description	Ref. No.
240V Charger	240VC2000



CABLE CUTTING AND STRIPPING TOOLS

CABLE CUTTING & STRIPPING TOOL

A hand operated tool capable of cutting aluminium and copper conductors not exceeding 35mm or 8mm diameter

Description	Ref. No.
Up to 35mm (non ratchet)	BMC35



BMR80C HAND RATCHET CUTTER

A hand operated ratchet cutting tool designed to cut through aluminium and copper cables up to 80mm diameter. The unique blade design allows cables with tough steel wire armour to be cut. A ratchet tooth cleaning comb is integrated into the end of one handle for maintenance.

Description	Ref. No.
Ratchet Cutter	BMR80C



E10C CUTTER HEAD

Description	Ref. No.
Hydraulic Cutting Head	E10C
Spare Blade	E10CSB



STRIPPING TOOLS AND SPARE BLADES

STRIPPING TOOLS AND SPARE BLADES

Diameter	Description	Ref. No.
Up to 8mm	Cable Cutting & Stripping Tool	UNI8
25mm or above	Cable Stripping Tool	UNI25+
4.5mm to 29mm	Cable Stripping Tool	UNI29
19mm to 40mm	Cable Stripping Tool	UNI40
	Spare Blade for UNI29 & UNI40	UNIB1
	Spare Blade for UNI25+	UNIB2



OUTER SHEATH / INSULATION STRIPPING TOOL

Description	Ref. No.
20 - 40mm Diameter	8YRO-MF2/40E
20 - 58mm Diameter	8YRO-MF2/60E



OUTER SHEATH / INSULATION / STRIPABLE SCREEN REMOVAL STRIPPING TOOL

Description	Ref. No.
16 - 40mm Diameter	8YRO-MF3/40E
16 - 58mm Diameter	8YRO-MF3/60E



OUTER SHEATH / INSULATION / BONDED SCREEN STRIPPING TOOL

Description	Ref. No.
20 - 40mm Diameter	8YRO-MF3NP/40
20 - 58mm Diameter	8YRO-MF3NP/60

SHEATH STRIPPING PLIERS

Removes plastic, rubber, thin foil and soft metal sheaths.

Description	Ref. No.
Suitable for FP200	8YRO-PGOF
5 - 17mm Dia	8YRO-PG0
8 - 21mm Dia	8YRO-PG1
21 - 35mm Dia	8YRO-PG2
26 - 52mm Dia	8YRO-PG3
45 - 75mm Dia	8YRO-PG4
65 - 95mm Dia	8YRO-PG5
80 - 125mm Dia	8YRO-PG6



ADJUSTABLE INSULATION STRIPPING TOOLS

Cuts plastic and elastomeric insulation from high and medium voltage single core cables and low voltage three-core cables.

Description	Ref. No.
14 - 40mm Dia	8YRO-LH1
38 - 60mm Dia	8YRO-LH2
60 - 80mm Dia	8YRO-LH3
80 - 100mm Dia	8YRO-LH4
100 - 140mm Dia	8YRO-LH5
LH1 c/w depth gauge 14 - 40 Dia	8YRO-BRMCD1



SCREEN EDGE LIFTER

Used to catch the peelable semi-conductor.

Ref. No.
8YRO-DSP



ADJUSTABLE SCREEN SCORING TOOLS

This tool removes the peelable semi-conductor.

Description	Ref. No.
14 - 40mm Dia	8YRO-LHM1R
38 - 60mm Dia	8YRO-LHM2R



SCREEN STRIPPING TOOLS

Tools remove the bonded semi-conductor.

Description	Ref. No.
14 - 40mm Dia	8YRO-ASC40R1
38 - 60mm Dia	8YRO-ASC40R2
60 - 80mm Dia	8YRO-LHS3
80 - 110mm Dia	8YRO-LHS4
100 - 140mm Dia	8YRO-LHS5



FIXED BLADE SCORING TOOL

Description	Ref. No.
0.4mm (0.015") depth	TT2352-1
0.6mm (0.025") depth	TT2352-2
1.5mm (0.06") depth	TT2352-3



SHEATH SPREADERS

Used to spread the sheath to facilitate the passing of the shield connection.

Description	Ref. No.
50/95mm ²	8YRO-EV50-95
150/240mm ²	8YRO-EV150-240



INSULATION CHAMFERING TOOLS

Allows cylindrical and tapered stripping of high and very high voltage single core dry cables.

Description	Ref. No.
38 - 60mm Dia (LHC2)	8YRO-NO2
60 - 80mm Dia (LHC3)	8YRO-NO3
95 - 110mm Dia (LHC4)	8YRO-NO4
100 - 140mm Dia (LHC5)	8YRO-NO5

OUTER SHEATH ROLLER PLIERS

Used to reposition the cable shield ahead of ligature connection.

Description	Ref. No.
11kV 50 - 240mm	8YRO-ALROCAN

ADJUSTABLE TAPERING TOOL

Produces a taper only on the insulation.

Ref. No.
8YRO-LHA

SCRAPER TOOL

Removes marks on the semi-conductor.

Description	Ref. No.
Adjustable (Aluminium)	8YRO-SCRAPER
Fixed (Phosphor Bronze)	8YRO-SCRAPER-B

PORTABLE INSULATION SANDING MACHINE

For

D
W
H

**This Product
Is No Longer Available**

Sorry For Any Inconvenience

DIES AND TOOL SPARES

G10 TYPE HYDRALIC TOOL DIES

A wide range of hexagon, indent and circumferential die sets to fit the G10 type tools. The U-PO pre-rounding dies enable sector shaped stranded conductors to be formed before fitting circular shaped connectors.

Description	Ref. No.
Nest die (SAC)	UNA-
Nest die (Copper)	UNX-C
Indentor die (SAC)	UP-A
Indentor die (Copper)	UP-C
Hexagonal die set (Aluminium)	U-
Hexagonal die set (Copper)	U-CHEX
Circumferential die set (Aluminium)	U-ART
Circumferential die set for MV (Copper)	U-H
Pre-rounding die set	U-PO
Deep indent die set (Aluminium)	U-D1



G14H HYDRAULIC TOOL DIES

Indent and circumferential dies to fit the G14H head. The PUADP adaptor enables the G10 type dies to be used in the G14H tool.

Description	Ref. No.
Nest Die (Copper)	PN-C
Indentor die (Copper)	PP-C
Adaptor die (To carry 'U' dies)	PUADP
Circumferential die set (Copper)	P-H
Circumferential die set (Copper/Aluminium)	P-ART



E22H HYDRAULIC TOOL DIE

Hexagon and indent dies to fit the E22H head. The ED22AD - adaptor die must be used to hold the EDP-C indentor in position in the crimping head.

Description	Ref. No.
Nest Die (Copper)	EDNX-C
Indentor die (Copper)	EDP-C
Hexagonal die (Aluminium)	ED-
Adaptor die (Copper)	ED22AD-



EDNX-C

EDP-C

ED

ED22AD-

HOSES

Black flexible conducting hydraulic hoses for use with Prysmian Components' pump units rated at 700 Bar (10,000 psi) in dead line situations. The hoses are supported at each end by a flexible steel spring and are complete with screw on couplings.

Description	Ref. No.
Hose, 10,000 p.s.i 2.5m length	DLH10-25
Hose, 10,000 p.s.i 4.6m length	DLH10-46



JOINTING PASTE

An oxide inhibiting paste designed to prevent galvanic corrosion and to enhance connections in electrical joints. It is especially effective when used on copper to aluminium and aluminium to aluminium joints. BX1 has a mineral oil base and BX13 a synthetic oil base.

Ref. No.
BX1-225 (Squeeze Tube - Pictured)
BX1-BUCKET (3Kg)
BX13-BUCKET (3Kg)



Cable Joints & Terminations

Section

Prysmian Components is able to offer a wide range of Joints and Terminations to its specialist stockists in addition to its standard LV ranges.

COLD FIT Cold Applied MV Terminations
for single and three core XLPE polymeric cables.

BITHERM Heat Shrink MV Terminations
for three core XLPE polymeric and paper cables.

MODULUS™ Hydrocarbon Resistant MV Joints
incorporating cold applied technology. For use in oil and petrochemical installations.

AFUMEX® LSOH Joints
including cold applied technology, with phenolic shells filled with jem resin.

ELASPEED Cold Applied MV Cable Joints
for single and three core XLPE polymeric cables.

BITHERM Heat Shrink MV Joint
for three core XLPE polymeric and paper cables.

Mains Cables Joints and Accessories
comprehensive range for paper insulated cables.



JOINTING SYSTEMS LOW VOLTAGE (600/1000 VOLTS) CABLE JOINTS

POLYURETHANE 'TWIN PACK' RESIN STRAIGHT JOINTS

Complete with armour bond and 4 compression connectors. Complies with Performance Standard BS788, BS6910 Part 1 and European Standard HD 623 S1.

Cables	Ref. No.
4 x 4mm ²	PUJ2CC
4 x 6mm ²	PUJ6CC
4 x 10mm ²	PUJ10CC
4 x 16mm ²	PUJ16CC
4 x 25mm ²	PUJ25CC
4 x 35mm ²	PUJ35CC
4 x 50mm ²	PUJ50CC
4 x 70mm ²	PUJ70CC
4 x 95mm ²	PUJ95CC
4 x 120mm ²	PUJ120CC
4 x 150mm ²	PUJ150CC
4 x 185mm ²	PUJ185CC
4 x 240mm ²	PUJ240CC
4 x 300mm ²	PUJ300CC
4 x 400mm ²	PUJ400CC



POLYURETHANE 'TWIN PACK' RESIN STRAIGHT JOINTS WITH ARMOUR BOND

Connectors not included - please refer to page 26.

Max Cable Range	Ref. No.
4 x 4mm ²	MPJ1
4 x 10mm ²	MPJ2
4 x 25mm ²	MPJ3
4 x 50mm ²	MPJ4
4 x 95mm ²	MPJ5
4 x 185mm ²	MPJ6
4 x 300mm ²	MPJ7
4 x 400mm ²	MPJ8



LV STRAIGHT JOINTS SUITABLE FOR MECHANICAL CONNECTORS

Connectors not included - please refer to page 35.

Max Cable Size	Ref. No.
4 x 6mm ²	MST6
4 x 16mm ²	MST16
4 x 35mm ²	MST35
4 x 95mm ²	MST95
4 x 185mm ²	MST185
4 x 300mm ²	MST300
4 x 400mm ²	MST400



LV BRANCH JOINTS SUITABLE FOR MECHANICAL CONNECTORS

Connectors not included. See page 35.

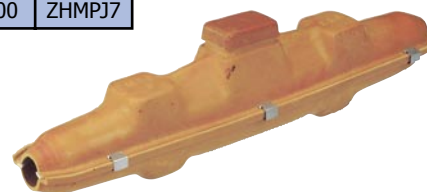
Max Cable Size	Ref. No.
4 x 6mm ²	MBR6
4 x 16mm ²	MBR16
4 x 35mm ²	MBR35
4 x 95mm ²	MBR95
4 x 185mm ²	MBR185
4 x 300mm ²	MBR300



AFUMEX® LSOH STRAIGHT JOINTS

Designed for use with Afumex, LSOH and LSF cables. The joints are non-halogenated and do not produce any toxic emissions on burning. Connectors not included - please refer to page 26.

Cable Size mm ²	Ref. No.
4 - 10	ZHMPJ2
16	ZHMPJ3
25 - 35	ZHMPJ4
50 - 95	ZHMPJ5
120 - 185	ZHMPJ6
240 - 300	ZHMPJ7



* Fire performance versions available upon request.

* Oil and petrochemical resistant versions available upon request.

Spare resin packs are available on request.

MECHANICAL CONNECTORS AND ACCESSORIES (600/1000 VOLTS)

MECHANICAL CORE CONNECTORS MAIN & BRANCH

For stranded copper conductors.

Ref. No.
MT6C (CMC6)
P12G (Copper and Aluminium)



UNIVERSAL MECHANICAL LOW VOLTAGE STRAIGHT MAINS CONNECTORS

For stranded/solid aluminium and copper conductors.

Conductor Range/mm ²	Ref. No.
16 - 95	BM95M
16 - 185	BM185M
95 - 300	BM300M



UNIVERSAL MECHANICAL LOW VOLTAGE MAINS BRANCH CONNECTORS

For stranded/solid aluminium and copper conductors.

Conductor Range mm ²	Ref. No.
16 - 95	BM95B
16 - 185	BM185B
95 - 300	BM300B



UNIVERSAL MECHANICAL LOW VOLTAGE SINGLE SERVICE CONNECTORS

For stranded/solid aluminium and copper conductors.

Conductor Range mm ²	Service size mm ²	Ref. No.
16 - 95	4-35	BM95MS1
16 - 185	4-35	BM185MS1
95 - 300	4-35	BM300MS1



UNIVERSAL MECHANICAL LOW VOLTAGE DOUBLE SERVICE CONNECTORS

For stranded/solid aluminium and copper conductors.

Conductor Range mm ²	Service size mm ²	Ref. No.
16 - 95	4-35	BM95MS2
16 - 185	4-35	BM185MS2
95 - 300	4-35	BM300MS2



TOOLING FOR MECHANICAL CONNECTORS

Description	Ref. No.
Insulated spanner for holding branch connectors BM95B	BMS40
Insulated spanner for holding branch connectors BM185B and BM300B	BMS55
Insulated holding tool for straight connectors BM95M, BM185M and BM300M	BMHOLDER



BRASS TUNNEL CONNECTORS FOR STRANDED OR SOLID CONDUCTORS

Conductor Range mm ²	Ref. No.
4 - 35	BMT35
35 - 70	BMT70



MECHANICAL CONNECTORS FOR WAVEFORM CNE CONDUCTORS

Conductor Range mm ²	Ref. No.
115	BMN115
240	BMN240



11kV SAC/STRANDED CONNECTORS

Size Range (mm ²)	Ref. No.
50 - 95 (10 - 95)*	BMHC95ALDSP
185 - 300 SAC (10 - 300 SAC)**	BMHC185ALDSP
185 - 300 (10 - 300)*	BMHC300ALDSP

* Connector range with the addition of centralising sleeves.
(Available on request)

** Connector suitable for 300mm² SAC only.



11kV MECHANICAL TERMINALS

Size Range (mm ²)	Application	Ref. No.
95 - 185	Indoor	BMHTI185AS1
300	Indoor	BMHTI300AS1
95 - 185	Outdoor	BMHTO185AS3
300	Outdoor	BMHTO300AS3



33kV STRANDED CONNECTORS

Size Range (mm ²)	Ref. No.
240 - 300	BMHC300TADSP
400 - 500 (185 - 500)*	BMHC500TCDSP
500 - 630 (240 - 630)*	BMHC630TCDSP

* Connector range with the addition of centralising sleeves.
(Available on request)



CABLE JOINTS FOR 11kV SINGLE CORE UNARMoured CABLES BS7870 - 4.10

11kV STRAIGHT JOINTS

To suit single core polymeric cables.
(Connectors not included)

Application Range mm ²	Ref. No.
95 - 185	EJ-SXU-A-12
185 - 300	EJ-SXU-B-12
400 - 630	EJ-SXU-D-12



11kV BRANCH JOINTS

To suit single core polymeric cables.
(Connectors included)

Application Range mm ²	Ref. No.
95 - 185	EJ-BSXU-A-12
185 - 300	EJ-BSXU-B-12



11kV TRIFURCATING TRANSITION STRAIGHT JOINTS

To suit paper cables (belted or screened) to single core polymeric cables. (Connectors included)

Application Range mm ²	Ref. No.
95 - 185	EJ-TTU-A-12
185 - 300	EJ-TTU-B-12



CABLE JOINTS FOR 11kV THREE CORE UNARMoured CABLES BS7870 - 4.10

11kV STRAIGHT JOINTS

To suit three core polymeric cables.
(connectors not included)

Application Range mm ²	Ref. No.
95 - 185	EJ-3XU-A-12
185 - 300	EJ-3XU-B-12



BUILD UP KIT FOR POLYMERIC CABLES

Application Range mm ²	Ref. No.
50 - 70 SAC/Stranded	EJ-BX-A-12
120 - 150 SAC/Stranded	EJ-BX-B-12



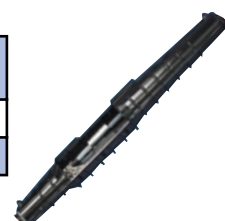
BUILD UP KIT FOR PAPER CABLES

Application Range mm ²	Ref. No.
16 - 70 Stranded	EJ-BP-A-12
95 - 185 Stranded	EJ-BP-B-12

11kV TRIFURCATING STRAIGHT JOINTS

To suit three core polymeric cable to single core polymeric cable.

Application Range mm ²	Ref. No.
95 - 185	EJ-TXU-A-12
185 - 300	EJ-TXU-B-12



11kV TRIFURCATING JOINT

Three core armoured to single core unarmoured.
(Connector not included)

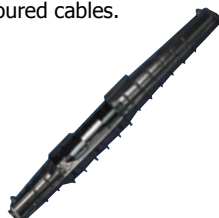
Application Range	Ref. No.
95 - 185	EJ-TXA-A-12



11kV STRAIGHT JOINT

To suit three core polymeric armoured cables.
(Connectors included)

Application Range mm ²	Ref. No.
95 - 185	EJ-3XA-A-12
185 - 300	EJ-3XA-B-12



11kV STRAIGHT TRANSITION JOINT

To suit three core polymeric armoured to three core paper cables. (Connectors included)

Application Range mm ²	Ref. No.
95 - 185	EJ-3PXA-A-12
185 - 300	EJ-3PXA-B-12



HEATSHRINK JOINTS FOR 11kV THREE CORE CABLES

11kV HEATSHRINK STRAIGHT JOINT

3 core universal joint suitable for belted or screened paper cables with lead sheaths (PILC) or for SWA polymeric cables or transition between paper & Polymeric. (Connectors Included)

Application Range mm ²	Ref. No.
95 - 185	HJ3CU11A
185 - 300	HJ3CU11B

CABLE JOINTS FOR 33kV CABLES

33kV STRAIGHT JOINT

To suit single core unarmoured polymeric cables.

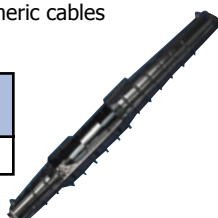
Application Range mm ²	Ref. No.
95 - 185	EJ-SXU-C-36-T3
185 - 630	EJ-SXU-D-36-T3



33kV STRAIGHT JOINT

To suit single core armoured polymeric cables
(Connector not included)

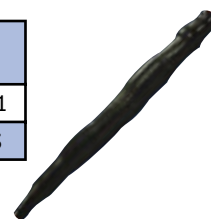
Application Range	Ref. No.
185 - 630	EJ-SXA-D-36-T3



33kV TRANSITION JOINT

To suit single core paper to single core polymeric cables. (Connector included)

Application Range	Ref. No.
185 - 300	SJ1530A-630S1
240 - 630	SJ1530A-630S



33kV TRIFURCATING TRANSITION STRAIGHT JOINTS

To suit three core paper insulated 'H' type to three single core polymeric insulated cables.

Based on Compression Connectors mm ²	Ref. No.
185 - 400	TJ3532A-300

33kV BUILD UP KIT FOR SINGLE CORE POLYMERIC/SINGLE CORE TRANSITION STRAIGHT JOINTS

Based on Compression Connectors mm ²	Ref. No.
95 - 150	MJ1430A

BUILD UP KIT FOR 'H' TYPE TRIFURCATING/TRANSITION STRAIGHT JOINTS

Based on Compression Connectors mm ²	Ref. No.
0.1/70 - 150 Paper	MJ3130A

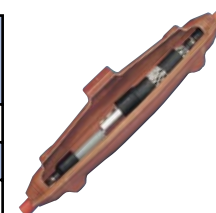
MEDIUM VOLTAGE LSOH, OIL AND PETROCHEMICAL INSTALLATIONS

These joints are intrinsically Low Smoke and Fume and flame retardant. The joints contain no halogens and do not produce any toxic emissions on burning and also provide excellent resistance to hydrocarbons found in petrochemical installations.

11kV STRAIGHT JOINTS (LSOH/OIL RESISTANT)

To suit polymeric insulated single core cables (With or without lead sheath)

Based on Compression Connectors mm ²	Ref. No.
50 - 150	PBSC11A
185 - 240	PBSC11B
300 - 630	PBSC11C



11kV STRAIGHT JOINTS (LSOH/OIL RESISTANT)

To suit polymeric insulated three core cables.
(With or without lead sheath)

Based on Compression Connectors mm ²	Ref. No.
50 - 150	PB3C11A
185 - 240	PB3C11B
300 - 400	PB3C11C



33kV STRAIGHT JOINTS (LSOH/OIL RESISTANT)

To suit polymeric insulated single core cables.
(With or without lead sheath)

Based on Compression Connectors mm ²	Ref. No.
50 - 95	PBSC33A
120 - 185	PBSC33B
240 - 400	PBSC33C
500 - 630	PBSC33D



33kV STRAIGHT JOINTS (LSOH/OIL RESISTANT)

To suit polymeric insulated three core cables.
(With or without lead sheath)

Based on Compression Connectors mm ²	Ref. No.
50 - 95	PB3C33A
120 - 185	PB3C33B
240 - 400	PB3C33C



COLD FIT TERMINATIONS 11kV

11kV terminations to suit polymeric insulated single or three core copper wire screen cables. For cables with a copper tape screen, additional earthing kits required.



INDOOR SINGLE CORE TERMINATION

To suit polymeric insulated single core cables.

Based on Compression Connectors Range/mm ²	Ref. No.	Earth Kit CU Tape Screen	Earth Kit Lead Sheath
50 - 95	CIT-SX-A-12	ESE1	ESE1+ESE11
120 - 300	CIT-SX-B-12	ESE2	ESE2+ESE12
400 - 630	CIT-SX-C-12	ESE3	ESE3+ESE13



11kV OUTDOOR SINGLE CORE TERMINATIONS

To suit polymeric insulated single core cables to BS 7870 - 4.10

Based on Compression Connectors mm ²	Ref. No.	Earth Kit CU Tape Screen	Earth Kit Lead Sheath
50 - 95	COT-SX-A-12	ESE1	ESE1+ESE11
120 - 300	COT-SX-B-12	ESE2	ESE2+ESE12
400 - 630	COT-SX-C-12	ESE3	ESE3+ESE13



11kV INDOOR THREE CORE TERMINATIONS

To suit polymeric insulated three core cables.

Based on Compression Connectors mm ²	Ref. No.	Earth Kit CU Tape Screen	Earth Kit Lead Sheath
35 - 70	CIT-3X-A-12	ESE1	ESE1+ESE11
95 - 185	CIT-3X-B-12	ESE2	ESE2+ESE12
240 - 300	CIT-3X-C-12	ESE3	ESE3+ESE13
400	CIT-3X-D-12	ESE3	ESE3+ESE13



11kV OUTDOOR THREE CORE TERMINATIONS

To suit polymeric insulated three core armoured cables to BS 6622

Based on Compression Connectors mm ²	Ref. No.	Earth Kit CU Tape Screen	Earth Kit Lead Sheath
35 - 70	COT-3X-A-12	ESE1	ESE1+ESE11
95 - 185	COT-3X-B-12	ESE2	ESE2+ESE12
240 - 300	COT-3X-C-12	ESE3	ESE3+ESE13
400	COT-3X-D-12	ESE3	ESE3+ESE13



HEATSHRINK TERMINATIONS 11kV

11kV INDOOR THREE CORE HEATSHRINK TERMINATION

To suit paper insulated three core lead sheathed cables.

Conductor Cross Section mm ²	Indoor Termination	Earth Kit - Lead Sheath
16	HIT3P - A - 11	ESE1 + ESE11
25	HIT3P - A - 11	ESE1 + ESE11
35	HIT3P - B - 11	ESE1 + ESE11
50	HIT3P - B - 11	ESE1 + ESE11
70	HIT3P - B - 11	ESE1 + ESE11
95	HIT3P - C - 11	ESE2 + ESE12
120	HIT3P - C - 11	ESE2 + ESE12
150	HIT3P - C - 11	ESE2 + ESE12
185	HIT3P - C - 11	ESE2 + ESE12
240	HIT3P - C - 11	ESE2 + ESE12
300	HIT3P - D - 11	ESE3 + ESE13
400	HIT3P - D - 11	ESE3 + ESE13

11kV INDOOR THREE CORE HEATSHRINK TERMINATION

To suit three core polymeric insulated copper wire screen cables.

Conductor Cross Section mm ²	Indoor Termination	Earth Kit CU Tape
16	HIT3X - A - 11	ESE1
25	HIT3X - A - 11	ESE1
35	HIT3X - B - 11	ESE1
50	HIT3X - B - 11	ESE1
70	HIT3X - B - 11	ESE1
95	HIT3X - C - 11	ESE2
120	HIT3X - C - 11	ESE2
150	HIT3X - C - 11	ESE2
185	HIT3X - C - 11	ESE2
240	HIT3X - C - 11	ESE2
300	HIT3X - D - 11	ESE3
400	HIT3X - D - 11	ESE3



COLD FIT TERMINATIONS 33kV

33kV terminations to suit polymeric insulated single or three core copper wire screen cables. For cables with copper wire tape screen, additional earthing kits required. Please see below.

33kV INDOOR/OUTDOOR SINGLE CORE TERMINATIONS

Based on Compression Connectors mm ²	Ref. No.
50 - 185	CT-SX-B-36
240 - 400	CT-SX-C-36
500 - 630	CT-SX-D-36



33kV INDOOR/OUTDOOR THREE CORE TERMINATIONS

Based on Compression Connectors mm ²	Ref. No.
50 - 70	CT-3X-B-36
95 - 120	CT-3X-C-36
150 - 400	CT-3X-D-36



TERMINATION ACCESSORIES 11kV

INSULATING SHROUD (SET OF 3)

Silicone rubber.

Ref. No.
ESS - 24



INSULATING SHROUDS - HEATSHRINK (SET OF 3)

Conductor Cross Section mm ²	Ref. No.
Right Angled	
16 - 35	HSBA1
35 - 240	HSBA2
300 - 400	HSBA3
Straight	
16 - 70	HSBS1
95 - 400	HSBS2



SUPPORT INSULATORS (SET OF 3)

	Ref. No.
11kV	HSI32
36kV	HSI33



TERMINATION ACCESSORIES 11kV

METAL SUPPORT BRACKET

Ref. No.
HSB1



TOP HAT GLANDS (THREE CORE CABLES)

Application Range mm ²	Ref. No.
35 - 95	MTHG1
120 - 300	MTHG2



MAINS CABLE JOINTS

3.3 - 11kV CAST IRON STRAIGHT JOINTS

For paper insulated cables. Designs contain cast iron box, lead sleeve assembly and three weak back ferrules.

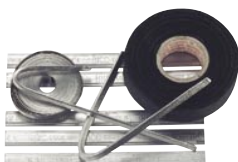
Max Cable Size mm ²	Ref. No.
50	C70982-01
70	C70982-02
95	C70982-03
120	C70982-04
150	C70982-05
185	C70982-06
240	C70982-07
300	C70982-08



11kV ACCESSORY PACK

Each pack contains:
Grade 'D' plumbers metal
Corrugated lead tape
Hessian tape
Grade 'M' solder (for copper conductors)
Sufficient consumables for 2 joints up to 120mm² or
1 joint 150-300mm²

Cable Type	Ref. No.
Copper	C74152 - 01



CORALINE FLUX

Description	Ref. No.
0.45Kg Tin	T70131-02



BICASEAL - SOLID SETTING PUTTY

Description	Ref. No.
0.5Kg Pack	F70612-52



PAPER STRESS CONES

Supplied one per tin.

Max Cable Size mm ²	Ref. No.
up to 185	D70122 - 01
up to 400	D70122 - 04



CREPE PAPER PACKS

For 11kV belted/screened and 33kV straight joints.

Ref. No.
D70226- 22



INSULATING SEPARATORS

Ref. No.
F70161 - 04
F70161 - 06
F70161 - 07
F70161 - 09



BICAFLUX - (ALUFLUX)

For stranded or solid aluminium conductors.

Description	Ref. No.
150cc	F71003-02



ANTIMONIAL LEAD WIRE

Description	Ref. No.
2mm x 5metres	D70113-01
3mm x 5metres	D70113-02

TAPES

Description	Ref. No.
19mm x 66 metres lg.	F10507-03 G507
36 x 5.5metres/Tin	F70515-06 G515
19mm x 23 metres lg.	F70532-01 G532

**HOT POUR COMPOUNDS TO BS1858**

Description	Ref. No.
G8 (10 Kg)	F70208-66
G21 (10 Kg)	F70021-66
G83M (10 Kg)	F70083-67
G101 (10 Kg)	F70201-66
G123 (10 Kg)	F70162-66

**COMPOUNDS**

Description	Ref. No.
G38A (25 Litre)	F70038-55

**FUSED EQUIPMENT****CONNECTOR BLOCKS - SINGLE POLE 5 WAY**

Insulated Connectors are housed in mouldings made from black phenolic materials. Cable knockouts or blanking disks are provided in all units. Maximum conductor size 35mm.

Description	Ref. No.
Fully enclosed with removeable cover	G72273-60

**CONNECTOR BLOCKS - DOUBLE POLE 5 WAY**

Insulated Connectors are housed in mouldings made from black phenolic materials. Cable knockouts or blanking disks are provided in all units.

Description	Ref. No.
5 way phase and neutral	G70098-02

**ELECTRICAL WEATHERPROOF COMPOUND**

Description	Ref. No.
0.5 Kg Pack	R391
3Kg Pack	R392



Separable Connectors

Section

Prysmian's FORMFIT range of MV separable connectors are suitable for a wide range of applications, including connection of cable to transformers, switchgear units, motors etc. and also cable to cable.

Suitable for indoor and outdoor installations, the connectors are entirely protected by a watertight conductive envelope connected to earth.

The range includes:

Straight and right angle connectors, straight connecting plugs, joints/branch connectors and accessories (which include insulated earthing and stand-off plugs).

Features and Benefits include:

No need for special tooling.

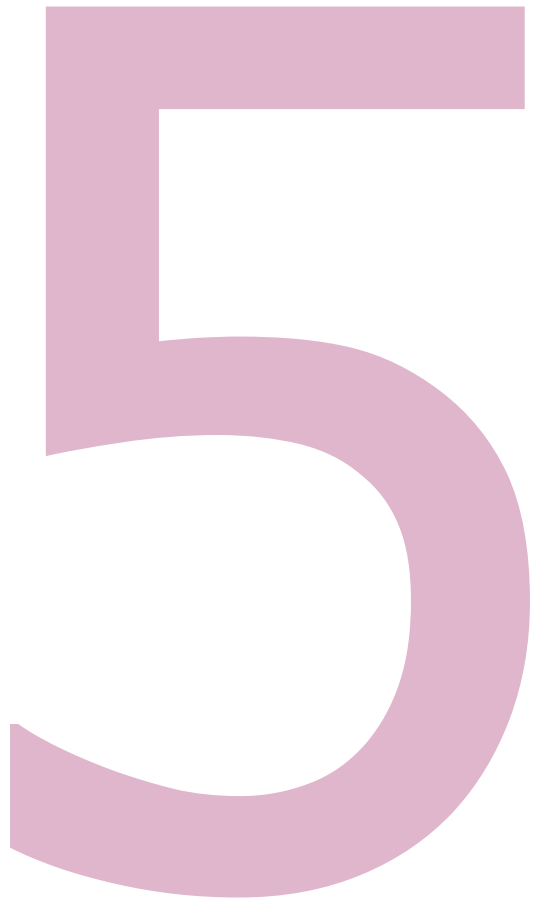
Vertical, angled or inverted position.

No minimum distance between phases.

Energising can take place immediately after the connector is plugged to its individual bushing, dead end plug etc.

Individual clamping by stainless steel brace.

Connectors packed separately.



formfit 250A STRAIGHT AND ELBOW CONNECTORS

STRAIGHT CONNECTORS

To suit polymeric cable up to 12kV - non-loadbreak operation - rating 250A

Conductor Size mm ² 12kV	Ref. No.
16	FMCS-250-A
25	FMCS-250-B
35	FMCS-250-C
50	FMCS-250-D
70	FMCS-250-E
95	FMCS-250-F



Voltage Class: kV
Earthing Kit: T1 (Polyam) T2 (Copper Tape) T3 (Copper Wire)
Conductor Type and size in mm²: "A" (Aluminium) - mm² "C" (Copper) - mm²

ELBOW CONNECTORS TO 12kV

To suit polymeric cable up to 12kV - non-loadbreak operation - rating 250A

Conductor Size mm ² 12kV	Ref. No.
16	FMCE-250-A
25	FMCE-250-B
35	FMCE-250-C
50	FMCE-250-D
70	FMCE-250-E
95	FMCE-250-F



Voltage Class: kV
Earthing Kit: T1 (Polyam) T2 (Copper Tape) T3 (Copper Wire)
Conductor Type and size in mm²: "A" (Aluminium) - mm² "C" (Copper) - mm²
To select: Ref. No. + Voltage class + Earthing kit + conductor type & size mm²
Note: Typical example for a 12kV straight connector for 16mm², copper wire screen cable aluminium conductor: FMCS-250-A-12-T3-A16
24kV available on request.

formfit ACCESSORIES FOR 250A STRAIGHT AND ELBOW CONNECTORS

CABLE BUSHINGS

For use in oil applications up to 12kV - non-loadbreak operation - rating 250A in oil.

Description	Ref. No.
Normal Bushing - 12kV Plate for system NF52-053	FMBom-250-12Q
Normal Bushing - 12kV Lead for system DIN 42538 or NF C 52-053	FMBom-250-12K
Long Bushing - 12kV Plate for system NF C 52-053	FMBOh-250-12Q
Long Bushing - 12kV Lead for system DIN 42538 or NF C 52-053	FMBOh-250-12K



CABLE BUSHINGS

For use in air applications up to 12kV - non-loadbreak operation.



Description	Ref. No.
Long Bushing - 12kV Plate for system NF C 52-053	FMBA-250-12Q
Long Bushing - 12kV Lead for system DIN 42538 or NF C 52-053	FMBA-250-12K

DEAD-END RECEPTACLE

EPDM moulding which provides a dead-end facility for insulating bushings.

Description	Ref. No.
Dead-End Receptacle 12kV - ratings 250A	FMR-250-12



DEAD-END PLUG

EPDM moulding which plugs into connector to provide dead-end facility.

Description	Ref. No.
Dead-End Plug 12kV - ratings 250A	FMPD-250-12



STAND-OFF PLUG

EPDM moulding which is designed to provide support and dead-end separable connector when removed from the equipment.

Description	Ref. No.
Stand-off Plug 12kV - rating 250A	FMPS-250-12



EARTHING PLUG

EPDM moulding designed to support and earth separable connectors when removed from equipment.

Description	Ref. No.
Stand-off Plug 12kV - rating 250A	FMPE-250



ELBOW CONNECTORS

To suit polymeric cable up to 36kV - non-loadbreak operation - rating 400A

Conductor Size mm ² 12kV	Conductor Size mm ² 36kV	Ref. No.
70	-	FMCE-400-Z
95	-	FMCE-400-A
120	25	FMCE-400-B
150	35	FMCE-400-C
185	50	FMCE-400-D
240	70	FMCE-400-E
300	95	FMCE-400-F
-	120/150	FMCE-400-G
-	185	FMCE-400-H
-	240	FMCE-400-J



Voltage Class: kV
 Earthing Kit: T1 (Polylam) T2 (Copper Tape) T3 (Copper Wire)
 Conductor Type and size in mm²: "A" (Aluminium) - mm² "C" (Copper) - mm²
 To select - Ref. No. + Voltage class + Earthing kit + conductor type & size mm²
 Note: Typical example for a 12kV straight connector for 95mm², copper wire screen cable aluminium conductor: FMCS-400-A-12-T3-A95
 24kV available on request.

formfit 400A SEPARABLE TEE CONNECTORS

TEE CONNECTORS

To suit polymeric cable up to 36kV - non-loadbreak operation - rating 400A

Conductor Size mm ² 12kV	Conductor Size mm ² 36kV	Ref. No.
70	-	FMCT-400-Z
95	-	FMCT-400-A
120	25	FMCT-400-B
150	35	FMCT-400-C
185	50	FMCT-400-D
240	70	FMCT-400-E
300	95	FMCT-400-F
-	120/150	FMCT-400-G
-	185	FMCT-400-H
-	240	FMCT-400-J



Voltage Class: kV
 Earthing Kit: T1 (Polylam) T2 (Copper Tape) T3 (Copper Wire)

TEE CONNECTORS

To suit polymeric cable up to 36kV - non-loadbreak operation - 400 series for 630A (with clamping screw).

Conductor Size mm ² 12kV	Conductor Size mm ² 36kV	Ref. No.
70	-	FMCTs-400-Z
95	-	FMCTs-400-A
120	25	FMCTs-400-B
150	35	FMCTs-400-C
185	50	FMCTs-400-D
240	70	FMCTs-400-E
300	95	FMCTs-400-F
-	120/150	FMCTs-400-G
-	185	FMCTs-400-H
-	240	FMCTs-400-J

Voltage Class: kV
 Earthing Kit: T1 (Polylam) T2 (Copper Tape) T3 (Copper Wire)
 Conductor Type and size in mm²: "A" (Aluminium) - mm² "C" (Copper) - mm²
 To select: Ref. No. + Voltage class + Earthing kit + conductor type & size mm²
 Note: Typical example for a 12kV tee connector for 95mm², copper wire screen cable aluminium conductor and socket contact: FMCT-400-A-12-T3-A95
 24kV available on request.

TEE CONNECTORS

To suit polymeric cable up to 24kV - non-loadbreak operation - 400 series for 630A (with clamping screw).

Conductor Size mm ² 12kV	Conductor Size mm ² 24kV	Ref. No.
70	35	FMCTs-400/1250-Z
120	50	FMCTs-400/1250-A
150	70	FMCTs-400/1250-B
-	95	FMCTs-400/1250-C
185	120	FMCTs-400/1250-D
240	150	FMCTs-400/1250-E
300	185	FMCTs-400/1250-G
-	240	FMCTs-400/1250-H
400	300	FMCTs-400/1250-J
500	400	FMCTs-400/1250-L
-	500	FMCTs-400/1250-N
-	630	FMCTs-400/1250-Q



Voltage Class: kV
 Earthing Kit: T1 (Polylam) T2 (Copper Tape) T3 (Copper Wire)
 Conductor Type and size in mm²: "A" (Aluminium) - mm² "C" (Copper) - mm²
 To select: Ref. No. + Voltage class + Earthing kit + conductor type & size mm²
 Note: Typical example for a 24kV tee connector for 300mm², copper wire screen cable aluminium conductor: FMCTs-400/1250-J-24-T3-A300

TEE CONNECTORS

For polymeric cable - deadbreak - rating 630A
(with clamping screw)

Diameter over insulation mm	Conductor Size mm ² 12kV	Conductor Size mm ² 17.5kV	Conductor Size mm ² 24kV	Conductor Size mm ² 36kV	Ref. No.
19.7 - 24.3	120-150	95-120	50-70	-	FMCTXs-630/C-NZ
23.3 - 28.5	185-240	150-185	95-150	50	FMCTXs-630/C-NA
27.6 - 32.6	300	240	185	70-120	FMCTXs-630/C-NB
30.6 - 35.8	400	300	240-300	150-185	FMCTXs-630/C-NC
33.8 - 38.8	500	400	400	240	FMCTXs-630/C-ND
36.8 - 41.8	630	500	500	300	FMCTXs-630/C-NE
39.8 - 45.8	-	630	630	400	FMCTXs-630/C-NF

Voltage Class: kV

Earthing Kit: T1 (Polylam) T2 (Copper Tape) T3 (Copper Wire)

Conductor Type and size in mm²: "A" (Aluminium) - mm² "C" (Copper) - mm²

To select: Ref. No. + Voltage Class + Earthing kit + Conductor type & size mm²

Note : Typical example for a 22kV tee connector for 300mm², insulation diameter 33.2mm, aluminium conductor, copper wire screen:

FMCTXs-630/C-NC-24-T3-A300



formfit ACCESSORIES FOR 400A ELBOW CONNECTORS

CABLE BUSHINGS

For use in oil applications up to 36kV - non-loadbreak operation - rating 400A.

Description	Ref. No.
Normal Bushing - 12kV rating 400A in oil	FMBOm-400-12
Normal Bushing - 24kV rating 400A in oil	FMBOm-400-24
Normal Bushing - 36kV rating 400A in oil	FMBOm-400-36

formfit ACCESSORIES FOR 400A TEE CONNECTORS

CABLE BUSHINGS

For use in oil applications up to 36kV - non - loadbreak operation - rating 400A.

Description	Ref. No.
Normal Bushing - 12kV rating 400A in oil	FMBOs-400-12
Normal Bushing - 24kV rating 400A in oil	FMBOs-400-24
Normal Bushing - 36kV rating 400A in oil	FMBOs-400-36



DEAD END RECEPTACLE

EDPM moulding which provides a dead-end facility for insulating bushings.

Description	Ref. No.
Dead End Receptacle 12kV - rating 400A	FMR-400-12
Dead End Receptacle 24kV - rating 400A	FMR-400-24
Dead End Receptacle 36kV - rating 400A	FMR-400-36



INSULATING PLUG

Epoxy resin mould which provides dead-end facility for separable tee connectors.

Description	Ref. No.
Insulating Plug 12kV - rating 400A	FMPI-400-12
Insulating Plug 24kV - rating 400A	FMPI-400-24
Insulating Plug 36kV - rating 400A	FMPI-400-36

STRAIGHT CONNECTION PLUG

Epoxy resin moulding over a copper rod for connecting two separable tee connectors FMCTs-400.

Description	Ref. No.
Straight Connection Plug 12kV - rating 630A	FMPCs-400-12
Straight Connection Plug 24kV - rating 630A	FMPCs-400-24
Straight Connection Plug 36kV - rating 630A	FMPCs-400-36



STAND OFF PLUG

EDPM moulding which is designed to provide support and dead-end separable connector when removed from the equipment.

Description	Ref. No.
Stand Off Plug 12kV - rating 400A	FMPS-400-12
Stand Off Plug 24kV - rating 400A	FMPS-400-24
Stand Off Plug 36kV - rating 400A	FMPS-400-36



EARTHING PLUG

EPDM moulding designed to support and earth separable connectors when removed from the equipment.

Description	Ref. No.
Earthing Plug - Rating 400A	FMPE-400



formfit 600/1250A SEPARABLE TEE CONNECTORS

TEE CONNECTOR

To suit polymeric cable up to 24kV - non-loadbreak operation - rating 1250A (with clamping screw)

Conductor Size mm ² 12kV	Conductor Size mm ² 24kV	Ref. No.
120	50	FMCTs-600/1250-A
150	70	FMCTs-600/1250-B
-	95	FMCTs-600/1250-C
185	120	FMCTs-600/1250-D
240	150	FMCTs-600/1250-E
300	185	FMCTs-600/1250-G
-	240	FMCTs-600/1250-H
400	300	FMCTs-600/1250-J
500	400	FMCTs-600/1250-L
630	-	FMCTs-600/1250-M
-	500	FMCTs-600/1250-N
-	630	FMCTs-600/1250-Q



Voltage Class: kV
Earthing Kit: T1 (Polylam) T2 (Copper Tape) T3 (Copper Wire)
Conductor Type and size in mm²: "A" (Aluminium) - mm² "C" (Copper) - mm²
To select: Ref. No. + Voltage class + Earthing kit + conductor type & size mm²
Note: Typical example for a 24kV tee connector for 300mm², copper wire
screen cable aluminium conductor: FMCTs-600/1250-J-24-T3-A300

formfit ACCESSORIES FOR 600/1250A TEE CONNECTORS

CABLE BUSHINGS

For use in oil applications up to 24kV - non-loadbreak operation - rating 600/1250A (screw contact)

Description	Ref. No.
Normal Bushing - 12kV rating 600/1250A in oil	FMBOS-600/1250-12
Normal Bushing - 24kV rating 600/1250A in oil	FMBOS-600/1250-24



STRAIGHT CONNECTION PLUG

Epoxy resin moulding over a copper rod for connecting two separable tee connectors.

Description	Ref. No.
Straight Connection Plug 12kV - rating 600/1250A	FMPCs-600/1250-12
Straight Connection Plug 24kV - rating 600/1250A	FMPCs-600/1250-24



INSULATING PLUG

Epoxy resin mould which provides dead-end facility for separable tee connectors.

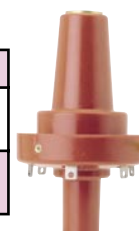
Description	Ref. No.
Insulating Plug 12kV - rating 600/1250A	FMPI-600/1250-12
Insulating Plug 24kV - rating 600/1250A	FMPI-600/1250-24



REDUCING PLUG FMPR - 600

Epoxy resin mould which allows a separable tee connector FMCTs-600/1250 to accept connectors of the 250A series.

Description	Ref. No.
Reducing Plug 12kV - rating 600A	FMPR-600-12
Reducing Plug 24kV - rating 600A	FMPR-600-24



Pressline® Emergency Stop Systems

Pressline® is a unique system that offers continuous emergency stop protection around complex industrial hazards.

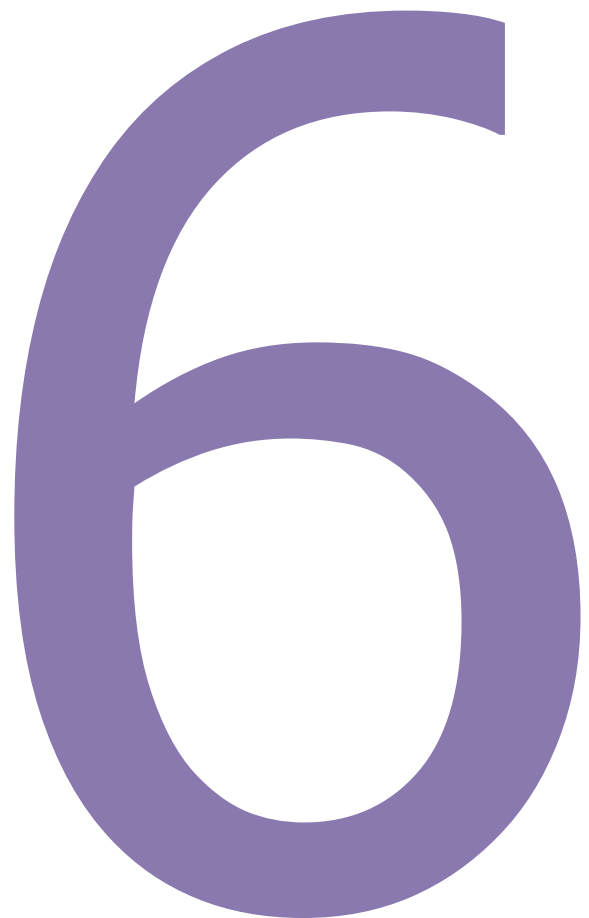
The actuating device is a patented pressure sensitive cable that can follow any route up to 10km. Activation is by pressing, bending or pulling the cable at any point along its length.

The Pressline Control Unit monitors the pressure sensitive cable and employs rigorously tested solid state technology. The control unit continuously monitors the cable and confirms system functionality. If an activation state is detected in the cable, the control unit interacts with the machinery controls to switch off plant and activate alarms. The Pressline Emergency Stop System offers the following features and benefits:

- Continuous emergency stop switching along routes up to 10km.
- Actuating cable can follow any route regardless of its complexity.
- Solid state technology eliminates the nuisance tripping often associated with contact failure on traditional systems.
- Low smoke and fume options are available for projects (minimum order quantities may apply).
- Immune from vibration degradation.
- Maintenance free operation.
- Self monitoring, fail safe system design.
- Quick and cost effective installation.

Typical applications include: airport baggage control, bottling plants, assembly lines, paper mills, high tech manufacturing environments, sorting and distribution centres, quarries and mines.

Section



PRESSLINE CABLE

Specially designed for this application, the cable will cause the control unit to trip when pressed, pulled, kinked or damaged (including being severed).



Ref. No.	Description
F105 720 966	Polyurethane Sheathed Pressline Cable
F105 721 490	2 Core Screened Interconnection Cable

CONTROL UNIT

Continuously monitors the condition of the Pressline cable and provides outputs and volt free relay contacts for machinery control and alarms. The unit will operate from 110V AC, 240V AC or 24V DC and is available with either key switch, push button or remote reset facilities.



Ref. No.	Description
W8 2350 2000	Control Unit - Key Reset
W8 2351 2000	Control Unit - Button Reset
W8 2352 2000	Control Unit - Remote Reset

END CLEATS

Designed for installation at the end of straight sections of a Pressline cable run, these cleats ensure that an axial pulling action will trip the system.



Ref. No.	Description
W8 2355 0003	End Cleat - Nylon (2 per pack)

CORNER CLEATS

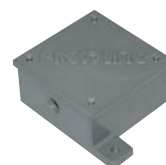
Allows Pressline cable to be turned through 90°, either vertically or horizontally without tripping the system.



Ref. No.	Description
W8 2356 0003	Corner Cleat - Nylon (5 per pack)

TERMINATION BOX

Used for terminating Pressline cables, the design facilitates both mechanical anchoring and electrical terminating of cables.



Ref. No.	Description
W8 2353 0000	Termination Box - Aluminium

PIGTAIL CABLE SUPPORTS

Galvanised steel pigtail used to support the Pressline cable.



Ref. No.	Description
W8 2999 0008	Galvanised Pigtails (10 per pack)

TERMINATION KIT

Contains everything required to terminate each end of the Pressline Cable.

Ref. No.	Description
W8 2354 0000	Termination Kit (2 per pack)

FOR CABLE ACCESSORIES FOR BS 5467 (XLPE,PVC 600/1000V) & BS 6724 (XLPE, LSOH 600/1000V)

Cond Size mm ²	No. of Cores	BICON Indoor Gland Kits*		BICON Indoor/Outdoor Gland Kits†		BICON Indoor/Outdoor Gland Kits†		BICON Telcleats		BICON Hook Cleat	BICON Claw & 2-Bolt Cleats	BICON Industrial Joints		BICON Universal Joints			BICON
		BW Kits	BW LSF Kits	CW Kits	CW LSF Kits	E1W Kits	E1W LSF Kits	Polythene	Afumex (LSF)	Glass Filled Nylon	Aluminium	Standard	Afumex (LSF)	Straight	Branch	Afumex (LSF)	Copper Lugs
		Size	Size	Size	Size	Size	Size	Size	Size	Size	Size	Size	Size	Size	Size	Size	Size
1.5	2	BW20sK (420AA52)	LSF20sBW (420LSF52)	CW20sK (422AA52)	LSF20sCW (422LSF52)	E1W20sK (421AA71)	LSF20sE1W (421LSF71)	385AA01	385LSF01	-	370BA01	MPJ1	ZHMPJ2	MST6	MBR6	ZHMPJ1	BT2C--
	3	BW20sK (420AA52)	LSF20sBW (420LSF52)	CW20sK (422AA52)	LSF20sCW (422LSF52)	E1W20sK (421AA71)	LSF20sE1W (421LSF71)	385AA01	385LSF01	-	370BA01	MPJ1	ZHMPJ2	MST6	MBR6	ZHMPJ1	BT2C--
	4	BW20sK (420AA52)	LSF20sBW (420LSF52)	CW20sK (422AA52)	LSF20sCW (422LSF52)	E1W20sK (421AA71)	LSF20sE1W (421LSF71)	385AA01	385LSF01	-	370BA01	MPJ1	ZHMPJ2	MST6	MBR6	ZHMPJ1	BT2C--
	7	BW20K (420AA53)	LSF20BW (420LSF53)	CW20sK (422AA52)	LSF20sCW (422LSF52)	E1W20sK (421AA71)	LSF20sE1W (421LSF71)	385AA02	385LSF02	-	370BA02	MPJ1	ZHMPJ2	MST6	MBR6	ZHMPJ1	BT2C--
	12	BW25K (420AA55)	LSF25BW (420LSF55)	CW25K (422AA55)	LSF25CW (422LSF55)	E1W25K (421AA55)	LSF25E1W (421LSF55)	385AA04	385LSF04	-	370BA04	MPJ2	ZHMPJ2	MST6	MBR6	ZHMPJ1	BT2C--
	19	BW25K (420AA55)	LSF25BW (420LSF55)	CW25K (422AA55)	LSF25CW (422LSF55)	E1W25K (421AA55)	LSF25E1W (421LSF55)	385AA04	385LSF04	-	370BA04	MPJ2	ZHMPJ2	MST16	MBR16	ZHMPJ2	BT2C--
	27	BW32K (420AA56)	LSF32BW (420LSF56)	CW32K (422AA56)	LSF32CW (422LSF56)	E1W32K (421AA55)	LSF32E1W (421LSF55)	385AA05	385LSF05	384AA01	370BA06	MPJ2	ZHMPJ2	MST16	MBR16	ZHMPJ2	BT2C--
	37	BW32K (420AA56)	LSF32BW (420LSF56)	CW32K (422AA56)	LSF32CW (422LSF56)	E1W32K (421AA56)	LSF32E1W (421LSF56)	385AA06	385LSF06	384AA01	370BA06	MPJ3	ZHMPJ3	MST16	MBR16	ZHMPJ2	BT2C--
	48	BW40K (420AA57)	LSF40BW (420LSF57)	CW40K (422AA57)	LSF40CW (422LSF57)	E1W32K (421AA56)	LSF32E1W (421LSF56)	385AA06	385LSF06	384AA01	370BA07	MPJ4	ZHMPJ4	MST16	MBR16	ZHMPJ2	BT2C--
2.5	2	BW20sK (420AA52)	LSF20sBW (420LSF52)	CW20sK (422AA52)	LSF20sCW (422LSF52)	E1W20sK (421AA71)	LSF20sE1W (421LSF71)	385AA01	385LSF01	-	370BA01	MPJ1	ZHMPJ2	MST6	MBR6	ZHMPJ1	BT2C--
	3	BW20sK (420AA52)	LSF20sBW (420LSF52)	CW20sK (422AA52)	LSF20sCW (422LSF52)	E1W20sK (421AA52)	LSF20sE1W (421LSF52)	385AA02	385LSF02	-	370BA02	MPJ1	ZHMPJ2	MST6	MBR6	ZHMPJ1	BT2C--
	4	BW20sK (420AA52)	LSF20sBW (420LSF52)	CW20sK (422AA52)	LSF20sCW (422LSF52)	E1W20sK (421AA52)	LSF20sE1W (421LSF52)	385AA02	385AA02	-	370BA02	MPJ1	ZHMPJ2	MST6	MBR6	ZHMPJ1	BT2C--
	7	BW20K (420AA53)	LSF20BW (420LSF53)	CW20K (422AA53)	LSF20CW (422LSF53)	E1W20K (421AA53)	LSF20E1W (421LSF53)	385AA03	385LSF03	-	370BA03	MPJ2	ZHMPJ2	MST6	MBR6	ZHMPJ1	BT2C--
	12	BW25K (420AA55)	LSF25BW (420LSF55)	CW25K (422AA55)	LSF25CW (422LSF55)	E1W25K (421AA55)	LSF25E1W (421LSF55)	385AA04	385LSF04	-	370BA05	MPJ2	ZHMPJ2	MST16	MBR16	ZHMPJ2	BT2C--
	19	BW25K (420AA55)	LSF25BW (420LSF55)	CW25K (422AA55)	LSF25CW (422LSF55)	E1W25K (421AA55)	LSF25E1W (421LSF55)	385AA05	385LSF05	384AA01	370BA06	MPJ2	ZHMPJ2	MST16	MBR16	ZHMPJ2	BT2C--
	27	BW32K (420AA56)	LSF32BW (420LSF56)	CW32K (422AA56)	LSF32CW (422LSF56)	E1W32K (421AA56)	LSF32E1W (421LSF56)	385AA06	385LSF06	384AA01	370BA06	MPJ4	ZHMPJ4	MST35	MBR35	ZHMPJ2	BT2C--
	37	BW40K (420AA57)	LSF40BW (420LSF57)	CW40K (422AA57)	LSF40CW (422LSF57)	E1W40K (421AA57)	LSF40E1W (421LSF57)	385AA06	385LSF06	384AA01	370BA07	MPJ4	ZHMPJ4	MST35	MBR35	ZHMPJ2	BT2C--
	48	BW40K (420AA57)	LSF40BW (420LSF57)	CW40K (422AA57)	LSF40CW (422LSF57)	E1W40K (421AA57)	LSF40E1W (421LSF57)	385AA07	385LSF07	384AA02	370BA08	MPJ4	ZHMPJ4	MST35	MBR35	ZHMPJ2	BT2C--
4	2	BW20sK (420AA52)	LSF20sBW (420LSF52)	CW20sK (422AA52)	LSF20sCW (422LSF52)	E1W20sK (421AA52)	LSF20sE1W (421LSF52)	385AA02	385LSF02	-	370BA02	MPJ1	ZHMPJ2	MST6	MBR6	ZHMPJ1	BT6c--
	3	BW20sK (420AA52)	LSF20sBW (420LSF52)	CW20sK (422AA52)	LSF20sCW (422LSF52)	E1W20sK (421AA52)	LSF20sE1W (421LSF52)	385AA02	385LSF02	-	370BA02	MPJ1	ZHMPJ2	MST6	MBR6	ZHMPJ1	BT6c--
	4	BW20sK (420AA52)	LSF20sBW (420LSF52)	CW20sK (422AA52)	LSF20sCW (422LSF52)	E1W20sK (421AA52)	LSF20sE1W (421LSF52)	385AA03	385LSF03	-	370BA02	MPJ1	ZHMPJ2	MST6	MBR6	ZHMPJ1	BT6c--
6	2	BW20K (420AA53)	LSF20BW (420LSF53)	CW20K (422AA53)	LSF20CW (422LSF53)	E1W20sK (421AA52)	LSF20sE1W (421LSF52)	385AA02	385LSF02	-	370BA02	MPJ1	ZHMPJ2	MST6	MBR6	ZHMPJ1	BT6c--
	3	BW20K (420AA53)	LSF20BW (420LSF53)	CW20K (422AA53)	LSF20CW (422LSF53)	E1W20K (421AA53)	LSF20E1W (421LSF53)	385AA03	385LSF03	-	370BA03	MPJ2	ZHMPJ2	MST6	MBR6	ZHMPJ1	BT6c--
	4	BW20K (420AA53)	LSF20BW (420LSF53)	CW20K (422AA53)	LSF20CW (422LSF53)	E1W20K (421AA53)	LSF20E1W (421LSF53)	385AA03	385LSF03	-	370BA03	MPJ2	ZHMPJ2	MST6	MBR6	ZHMPJ1	BT6c--
10	2	BW20K (420AA53)	LSF20BW (420LSF53)	CW20K (422AA53)	LSF20CW (422LSF53)	E1W20K (421AA53)	LSF20E1W (421LSF53)	385AA03	385LSF03	-	370BA03	MPJ2	ZHMPJ2	MST6	MBR6	ZHMPJ1	BT10c--
	3	BW20K (420AA53)	LSF20BW (420LSF53)	CW20K (422AA53)	LSF20CW (422LSF53)	E1W20K (421AA53)	LSF20E1W (421LSF53)	385AA04	385LSF04	-	370BA04	MPJ2	ZHMPJ2	MST16	MBR16	ZHMPJ1	BT10c--
	4	BW25K (420AA55)	LSF25BW (420LSF55)	CW25K (422AA55)	LSF25CW (422LSF55)	E1W25K (421AA55)	LSF25E1W (421LSF55)	385AA04	385LSF04	-	370BA04	MPJ2	ZHMPJ2	MST16	MBR16	ZHMPJ1	BT10c--
16	2	BW25K (420AA55)	LSF25BW (420LSF55)	CW25K (422AA55)	LSF25CW (422LSF55)	E1W25K (421AA55)	LSF25E1W (421LSF55)	385AA04	385LSF04	-	370BA04	MPJ2	ZHMPJ2	MST16	MBR16	ZHMPJ1	BT16c--
	3	BW25K (420AA55)	LSF25BW (420LSF55)	CW25K (422AA55)	LSF25CW (422LSF55)	E1W25K (421AA55)	LSF25E1W (421LSF55)	385AA04	385LSF04	-	370BA04	MPJ3	ZHMPJ3	MST16	MBR16	ZHMPJ1	BT16c--
	4	BW25K (420AA55)	LSF25BW (420LSF55)	CW25K (422AA55)	LSF25CW (422LSF55)	E1W25K (421AA55)	LSF25E1W (421LSF55)	385AA05	385LSF05	-	370BA05	MPJ3	ZHMPJ3	MST6	MBR6	ZHMPJ2	BT16c--
25	2	BW25K (420AA55)	LSF25BW (420LSF55)	CW25K (422AA55)	LSF25CW (422LSF55)	E1W25K (421AA55)	LSF25E1W (421LSF55)	385AA04	385LSF04	-	370BA04	MPJ3	ZHMPJ2	MST16	MBR16	ZHMPJ1	BT25c--
	3	BW25K (420AA55)	LSF25BW (420LSF55)	CW25K (422AA55)	LSF25CW (422LSF55)	E1W25K (421AA55)	LSF25E1W (421LSF55)	385AA05	385LSF05	384AA01	370BA06	MPJ3	ZHMPJ3	MST16	MBR16	ZHMPJ1	BT25c--
	4	BW32K (420AA56)	LSF32BW (420LSF56)	CW32K (422AA56)	LSF32CW (422LSF56)	E1W32K (421AA56)	LSF32E1W (421LSF56)	385AA06	385LSF06	384AA01	370BA06	MPJ3	ZHMPJ4	MST35	MBR35	ZHMPJ2	BT25c--

FOR FURTHER DETAILS PLEASE CONTACT SALES ON: TEL: +44 (0) 151 430 3655 OR FAX: +44 (0)151 430 3636

COMPONENTS SELECTOR CHART

NB: CODES IN RED INDICATE OLD BICC CODES

† INDOOR/OUTDOOR: To give protection against the ingress of dust and liquids

* INDOOR: For use in dry and dust free environments

10/01/2006

FOR CABLE ACCESSORIES FOR BS 5467 (XLPE,PVC 600/1000V) & BS 6724 (XLPE, LSOH 600/1000V)

Cond Size mm ²	No. of Cores	BICON Indoor Gland Kits*		BICON Indoor/Outdoor Gland Kits†		BICON Indoor/Outdoor Gland Kits†		BICON Telcleats		BICON Hook Cleat	BICON Claw & 2-Bolt Cleats	BICON Industrial Joints		BICON Universal Joints			BICON
		BW Kits	BW LSF Kits	CW Kits	CW LSF Kits	E1W Kits	E1W LSF Kits	Polythene	Afumex (LSF)	Glass Filled Nylon	Aluminium	Standard	Afumex (LSF)	Straight	Branch	Afumex (LSF)	Copper Lugs
		Size	Size	Size	Size	Size	Size	Size	Size	Size	Size	Size	Size	Size	Size	Size	Size
35	2	BW25K (420AA55)	LSF25BW (420LSF55)	CW25K (422AA55)	LSF25CW (422LSF55)	E1W25K (421AA55)	LSF25E1W (421LSF55)	385AA05	385LSF05	-	370BA05	MPJ3	ZHMPJ3	MST35	MBR35	ZHMBJ1	BT35c--
	3	BW32K (420AA56)	LSF32BW (420LSF56)	CW32K (422AA56)	LSF32CW (422LSF56)	E1W32K (421AA56)	LSF32E1W (421LSF56)	385AA06	385LSF06	384AA01	370BA06	MPJ4	ZHMPJ4	MST35	MBR35	ZHMBJ1	BT35c--
	4	BW32K (420AA56)	LSF32BW (420LSF56)	CW32K (422AA56)	LSF32CW (422LSF56)	E1W32K (421AA56)	LSF32E1W (421LSF56)	385AA06	385LSF06	384AA01	370BA06	MPJ4	ZHMPJ4	MST35	MBR35	ZHMBJ1	BT35c--
50	2	BW25K (420AA55)	LSF25BW (420LSF55)	CW25K (422AA55)	LSF25CW (422LSF55)	E1W25K (421AA55)	LSF25E1W (421LSF55)	385AA05	385LSF05	384AA01	370BA06	MPJ4	ZHMPJ3	MST95	MBR95	ZHMBJ1	BT50c--
	3	BW32K (420AA56)	LSF32BW (420LSF56)	CW32K (422AA56)	LSF32CW (422LSF56)	E1W32K (421AA56)	LSF32E1W (421LSF56)	385AA06	385LSF06	384AA01	370BA06	MPJ4	ZHMPJ5	MST95	MBR95	ZHMBJ1	BT50c--
	4	BW32K (420AA56)	LSF32BW (420LSF56)	CW32K (422AA56)	LSF32CW (422LSF56)	E1W40K (421AA57)	LSF40E1W (421LSF57)	385AA06	385LSF06	384AA01	370BA07	MPJ4	ZHMPJ5	MST95	MBR95	ZHMBJ1	BT50c--
70	2	BW32K (420AA56)	LSF32BW (420LSF56)	CW32K (422AA56)	LSF32CW (422LSF56)	E1W32K (421AA56)	LSF32E1W (421LSF56)	385AA06	385LSF06	384AA01	370BA06	MPJ4	ZHMPJ4	MST95	MBR95	-	BT70c--
	3	BW40K (420AA57)	LSF40BW (420LSF57)	CW40K (422AA57)	LSF40CW (422LSF57)	E1W40K (421AA57)	LSF40E1W (421LSF57)	385AA06	385LSF06	384AA01	370BA07	MPJ4	ZHMPJ5	MST95	MBR95	-	BT70c--
	4	BW40K (420AA57)	LSF40BW (420LSF57)	CW40K (422AA57)	LSF40CW (422LSF57)	E1W40K (421AA57)	LSF40E1W (421LSF57)	385AA07	385LSF07	384AA02	370BA08	MPJ5	ZHMPJ4	MST95	MBR95	-	BT70c--
95	2	BW32K (420AA56)	LSF32BW (420LSF56)	CW32K (422AA56)	LSF32CW (422LSF56)	E1W32K (421AA56)	LSF32E1W (421LSF56)	385AA06	385LSF06	384AA01	370BA07	MPJ4	ZHMPJ5	MST95	MBR95	-	BT95--
	3	BW40K (420AA57)	LSF40BW (420LSF57)	CW40K (422AA57)	LSF40CW (422LSF57)	E1W40K (421AA57)	LSF40E1W (421LSF57)	385AA07	385LSF07	384AA02	370BA08	MPJ5	ZHMPJ5	MST95	MBR95	-	BT95--
	4	BW50K (420AA59)	LSF50BW (420LSF59)	CW50sK (422AA58)	LSF50sCW (422LSF58)	E1W50sK (421AA58)	LSF50sE1W (421LSF58)	385AA08	385LSF08	384AA02	370BA08	MPJ5	ZHMPJ5	MST95	MBR95	-	BT95--
120	2	BW40K (420AA57)	LSF40BW (420LSF57)	CW40K (422AA56)	LSF40CW (422LSF57)	E1W40K (421AA57)	LSF40E1W (421LSF57)	385AA07	385LSF07	384AA01	370BA07	MPJ5	ZHMPJ6	MST185	MBR185	-	BT120c--
	3	BW50K (420AA59)	LSF50BW (420LSF59)	CW50sK (422AA58)	LSF50sCW (422LSF58)	E1W50sK (421AA58)	LSF50sE1W (421LSF58)	385AA07	385LSF07	384AA02	370BA08	MPJ6	ZHMPJ6	MST185	MBR185	-	BT120c--
	4	BW50K (420AA59)	LSF50BW (420LSF59)	CW50K (422AA59)	LSF50CW (422LSF59)	Contact Sales	Contact Sales	385AA08	385LSF08	384AA03	370BA09	MPJ6	ZHMPJ6	MST185	MBR185	-	BT120c--
150	2	BW40K (420AA57)	LSF40BW (420LSF57)	CW40K (422AA57)	LSF40CW (422LSF57)	E1W40K (421AA57)	LSF40E1W (421LSF57)	385AA07	385LSF07	384AA02	370BA08	MPJ5	ZHMPJ5	MST185	MBR185	-	BT150c--
	3	BW50K (420AA59)	LSF50BW (420LSF59)	CW50sK (422AA58)	LSF50sCW (422LSF58)	E1W50sK (421AA58)	LSF50sE1W (421LSF58)	385AA08	385LSF08	384AA03	370BA09	MPJ6	ZHMPJ6	MST185	MBR185	-	BT150c--
	4	BW50K (420AA59)	LSF50BW (420LSF59)	CW50K (422AA59)	LSF50CW (422LSF59)	E1W50K (421AA59)	LSF50E1W (421LSF59)	385AA08	385LSF08	384AA03	370BA09	MPJ6	ZHMPJ6	MST185	MBR185	-	BT150c--
185	2	BW50K (420AA59)	LSF50BW (420LSF59)	CW50sK (422AA58)	LSF50sCW (422LSF58)	E1W50sK (421AA58)	LSF50sE1W (421LSF58)	385AA08	385LSF08	384AA02	370BA08	MPJ5	ZHMPJ5	MST185	MBR185	-	BT185c--
	3	BW50K (420AA59)	LSF50BW (420LSF59)	CW50K (422AA59)	LSF50CW (422LSF59)	E1W50K (421AA59)	LSF50E1W (421LSF59)	385AA08	385LSF08	384AA03	370BA09	MPJ6	ZHMPJ6	MST185	MBR185	-	BT185c--
	4	BW63K (420AA61)	LSF63BW (420LSF61)	CW63K (422AA61)	LSF63CW (422LSF61)	E1W63sK (421AA60)	LSF63sE1W (421LSF60)	-	-	384AA04	370BA10	MPJ6	ZHMPJ6	MST185	MBR185	-	BT185c--
240	2	BW50K (420AA59)	LSF50BW (420LSF59)	CW50K (422AA59)	LSF50CW (422LSF59)	Contact Sales	Contact Sales	385AA08	385LSF08	384AA03	370BA09	MPJ6	ZHMPJ6	MST300	MBR300	-	BT240c--
	3	BW63K (420AA61)	LSF63BW (420LSF61)	CW63K (422AA61)	LSF63CW (422LSF61)	E1W63sK (421AA60)	LSF63sE1W (421LSF60)	-	-	384AA04	370BA10	MPJ7	ZHMPJ7	MST300	MBR300	-	BT240c--
	4	BW63K (420AA61)	LSF63BW (420LSF61)	CW63K (422AA61)	LSF63CW (422LSF61)	E1W63K (421AA61)	LSF63E1W (421LSF61)	-	-	384AA05	370BA11	MPJ7	ZHMPJ7	MST300	MBR300	-	BT240c--
300	2	BW50K (420AA59)	LSF50BW (420LSF59)	CW50K (422AA59)	LSF50CW (422LSF59)	E1W50K (421AA59)	LSF50E1W (421LSF59)	385AA08	385LSF08	384AA03	370BA09	MPJ6	ZHMPJ6	MST300	MBR300	-	BT300c--
	3	BW63K (420AA61)	LSF63BW (420LSF61)	CW63K (422AA61)	LSF63CW (422LSF61)	Contact Sales	Contact Sales	-	-	384AA04	370BA11	MPJ7	ZHMPJ7	MST300	MBR300	-	BT300c--
	4	BW75K (420AA63)	LSF75BW (420LSF63)	CW75K (422AA63)	LSF75CW (422LSF63)	E1W75sK (421AA62)	LSF75sE1W (421LSF62)	-	-	384AA05	370BA12	MPJ7	ZHMPJ7	MST300	MBR300	-	BT300c--
400	2	BW63K (420AA61)	LSF63BW (420LSF61)	CW63K (422AA61)	LSF63CW (422LSF61)	E1W63sK (421AA60)	LSF63sE1W (421LSF60)	-	-	384AA04	370BA10	MPJ8	ZHMPJ8	Contact Sales	-	-	BT400c--
	3	BW75sK (420AA62)	LSF75sBW (420LSF62)	CW75K (422AA63)	LSF75CW (422LSF63)	Contact Sales	Contact Sales	-	-	384AA05	370BA12	MPJ8	ZHMPJ8	Contact Sales	-	-	BT400c--
	4	BW75K (420AA63)	LSF75BW (420LSF63)	CW75K (422AA63)	LSF75CW (422LSF63)	E1W75K (421AA63)	LSF75E1W (421LSF63)	-	-	384AA06	370BA13	MPJ8	ZHMPJ8	Contact Sales	-	-	BT400c--

FOR FURTHER DETAILS PLEASE CONTACT SALES ON: TEL: +44 (0) 151 430 3655 OR FAX: +44 (0)151 430 3636

Prysmian Cables & Systems Limited, Components Unit, P.O. Box 4, Hall Lane, Prescot, Merseyside, L34 5UR, UK

Tel: +44 (0) 151 430 3655

Fax: +44 (0) 151 430 3636

E-mail: components.sales@prysmian.com

www.prysmian.co.uk

Agent's Stamp:

