

Light Curtain

BY WECO

WECO 917P light curtains



Part Number	Description
WECO-917P	WECO 917P light curtain pair, cables, mounting hardware and power supply

The WECO 917P light curtain is an economical light curtain that can be installed universally for both center opening and side opening doors, with or without nudging.

Installation is fast and simple - it is designed to attach to either the door or the wall with equal ease and all the mounting hardware is included. The 917P's elements are quickly plugged into the 120VAC power supply (also included). The TX and RX cables are identical, making mis-plugging them impossible.

The units are 78.75 inches • 2 meters tall and create a curtain using 94 crossbeams that work even in sunlight.

The WECO 917P complies with appropriate CE and cCSAus specifications.

Features

- Works for both center opening and side slide doors
- Meets CE and cCSAus standards
- Power supply with and without nudging is included (unlike some competitors who sell them separately)
- Easy to install - all hardware included
- Cables are true traveling cables and are TX/RX interchangeable
- Economical
- In stock and quickly delivered



Light Curtain

FORMULA SYSTEMS - cULus LISTED / ANSI/ASME A17.1/A17.5 / CSA B44/B44.1

SafeScreen



Part Number	Description
FDS-0547US05	SafeScreen light curtain/interface, 1.18 x 0.78 in. • 30 x 20 mm profile with 47 beam paths, interface is selectable 115/230VAC, signal output is volt-free changeover relay contacts, FPS-0271US01 universal interface and installation kit included.
FEXT-0016	Replacement lens, for SafeScreen light curtain

The SafeScreen light curtain is designed specifically for the North American market with 47 non-parallel infrared beam paths in a 1.18 x 0.78 in. • 30 x 20 mm profile to insure safe elevator operation. The mechanism is 7 feet • 2.14 m long. The light curtain includes a rugged and easily-installed interface equipped with multi-function buzzer/nudging.



SafeZone 3D

Part Number	Description
FDS-1047US05	SafeZone 3D light curtain/interface, 0.59 x 1.42 in. • 15 x 36 mm profile with 10 3D zones and 47 beam paths, interface is selectable 115/230VAC, signal output is volt-free changeover relay contacts, FPS-0271US01 universal interface and installation kit included.

The SafeScreen light curtain is designed specifically for the North American market with 47 non-parallel infrared beam paths in a 1.18 x 0.78 in. • 30 x 20 mm profile to insure safe elevator operation. The mechanism is 7 feet • 2.14 m long. The light curtain includes a rugged and easily-installed interface equipped with multi-function buzzer/nudging.



SlimScreen

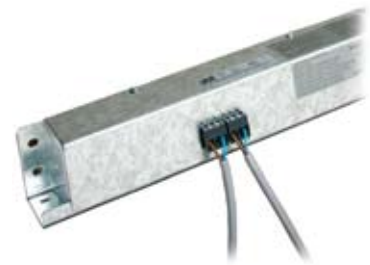
Part Number	Description
FDS-0735US05	SlimScreen light curtain/interface, 0.35 x 1.02 in. • 9 x 26 mm profile with 35 beam paths, interface is selectable 115/230VAC, signal output is volt-free changeover relay contacts, FPS-0271US01 universal interface and installation kit included

The SlimScreen light curtain is designed primarily for Euro/Pacific Rim installations and features a non-parallel array of 35 infrared beam paths in a 0.35 x 1.02 in. • 9 x 26 mm profile. The mechanism is 6.1 feet • 1.86 m long.



Universal Interface for Formula Systems' light curtains

Part Number	Description
FPS-0271US01	Universal interface, for above units



Components and Systems